

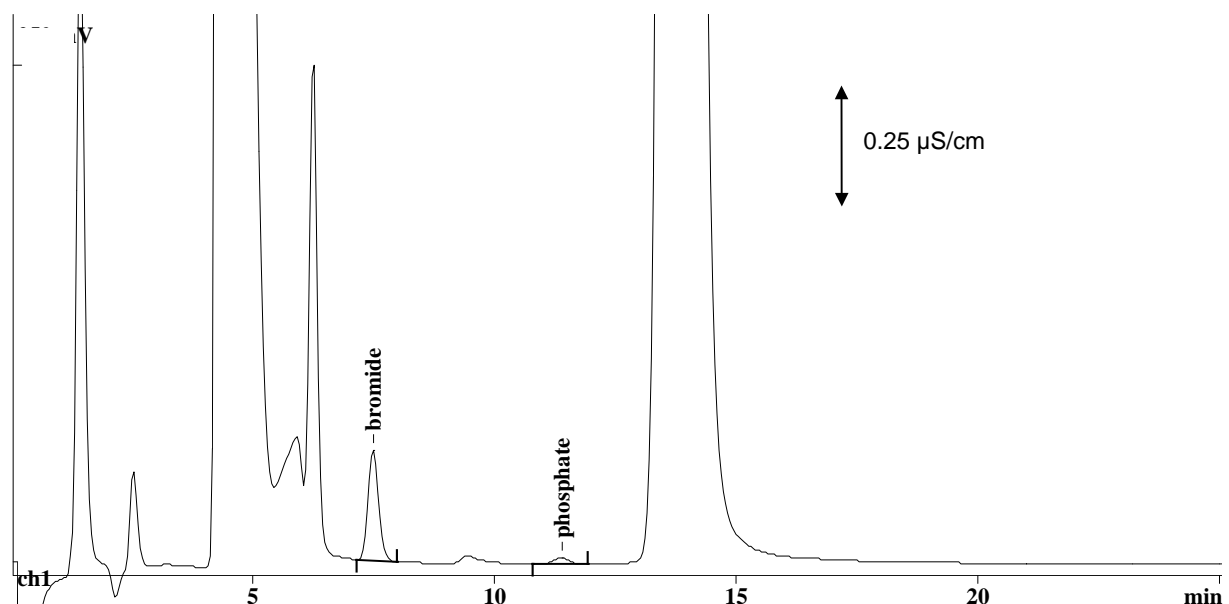
# IC Application Note No. S-42

**Title:** Traces of bromide and phosphate in process effluent with high organic load using dialysis as sample preparation

**Summary:** Determination of traces of bromide and phosphate in process effluent using anion chromatography with conductivity detection after chemical suppression and dialysis as sample preparation.

**Sample:** Process effluent with high organic load  
**Sample Preparation:** Direct injection using 754 Dialysis Unit

**Column:** 6.1006.100 Metrosep Anion Dual 2  
**Eluent:** 2.0 mmol/L sodium hydrogencarbonate, 1.3 mmol/L sodium carbonate  
**Suppressor:** Metrohm Suppressor Module (MSM, 50 mmol/L H<sub>2</sub>SO<sub>4</sub>)  
**Flow:** 0.8 mL/min  
**Injection Volume:** 20 µL after dialysis



<b>Results:</b>	bromide mg/L	phosphate mg/L
	<b>2.13</b>	<b>0.36</b>