


## 1 Minimum system requirements

<b>Processor</b>	Pentium 4 equivalent or higher
<b>Operating system</b>	<b>32-bit version of:</b> <ul style="list-style-type: none"><li>▪ Windows 10</li><li>▪ Windows 8.1</li><li>▪ Windows 8</li><li>▪ Windows 7</li><li>▪ Windows Vista (up to version 4.1.1.156)</li></ul> <b>64-bit version of:</b> <ul style="list-style-type: none"><li>▪ Windows 10</li><li>▪ Windows 8.1</li><li>▪ Windows 8</li><li>▪ Windows 7</li><li>▪ Windows Vista (up to version 4.1.1.156)</li></ul>
<b>Screen resolution</b>	Resolution 1024 x 768 or higher, EGA equivalent or higher
<b>RAM</b>	All operating systems: 1 GB minimum; 4 GB recommended
<b>Hard disk capacity</b>	Minimum 100 GB; 500 GB recommended.
<b>CD-ROM drive</b>	One CD-ROM (or compatible) drive is required for Vision installation.
<b>USB ports</b>	USB 2.0 or higher, two free ports recommended
<b>Mouse/pointer</b>	Required, USB, PS/2 style, or wireless
<b>Printer compatibility</b>	Must be connected to one of the following: <ul style="list-style-type: none"><li>▪ USB printer</li><li>▪ Network printer within immediate work area</li><li>▪ Alternative print connection, including parallel, IR, or other reliable methods</li></ul> <p>(A test page should be printed to verify correct operation)</p>
<b>Keyboard</b>	Compatible keyboard using USB / PS/2, or similar connection

<b>Serial port</b>	<ul style="list-style-type: none"> <li>▪ Required for System II</li> <li>▪ 1 additional required for Vision I/O Module interface</li> </ul> <p>The Windows user (installer) must have administrator rights in order to install Vision software.</p>
<b>Network environment</b>	<ul style="list-style-type: none"> <li>▪ 100 Mbits/sec, stable and permanent</li> <li>▪ Communication via Ethernet; RJ-45 connection</li> <li>▪ XDS requires DHCP server with available TCP/IP addresses (permanent address may be assigned)</li> </ul>
<b>System backup</b>	Network or CD backup required for data archiving

## 2 Installation

### 2.1 Server installation for MultiUser



**NOTICE**

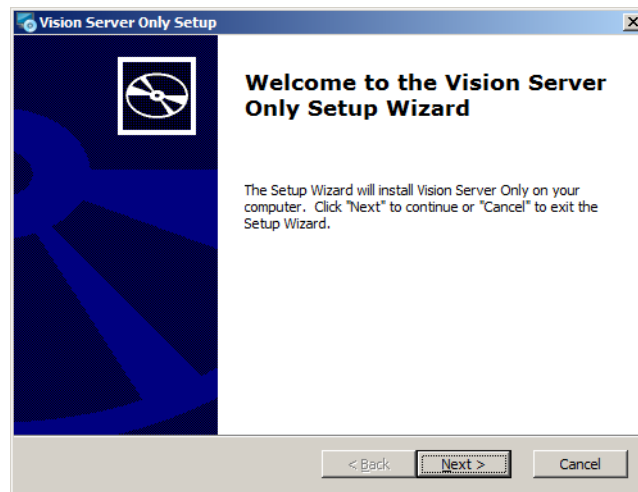
**System platform**

The System platform for installation the server and clients have to be with the same Windows version.

The Multi-user installation involves two main steps:

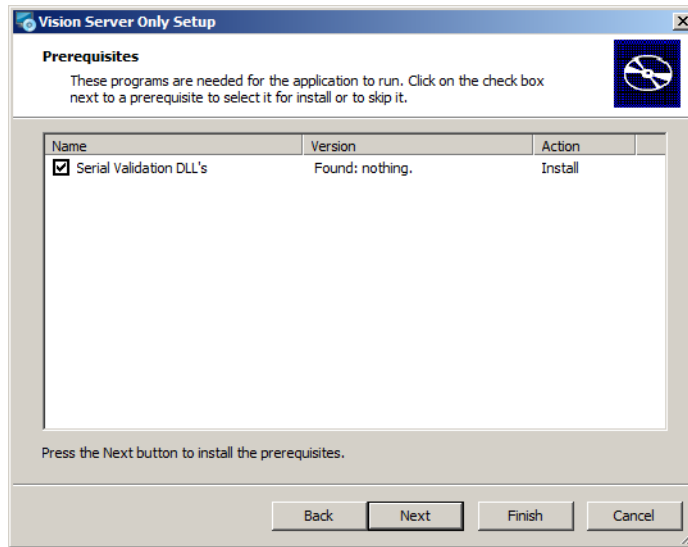
- 1: - "Install Vision Server"
- 2: - "Install Vision Client" (*see chapter 2.2, page 5*)

**1** After starting the server installation, this screen will be displayed:



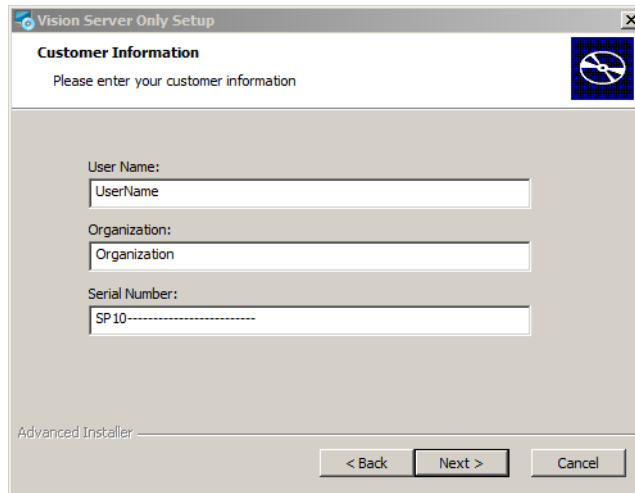
Click on **[Next]**.

- 2 Select the box "Serial Validation DLL's"



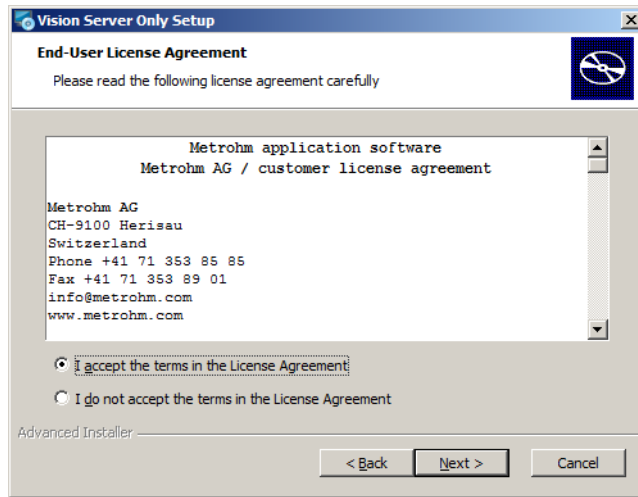
Click on **[Next]** to continue.

- 3 Vision requires the name and company of the primary user. Enter your name and company, the combination of the serial number and license number of Vision. (The serial number format may vary from that in the screenshot.)

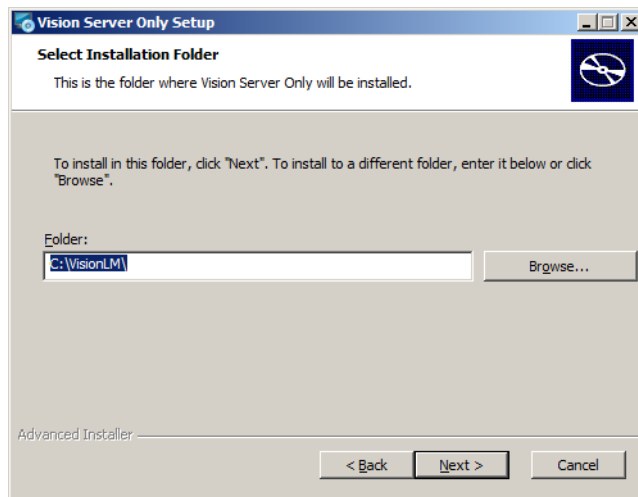


Click on **[Next]** to continue.

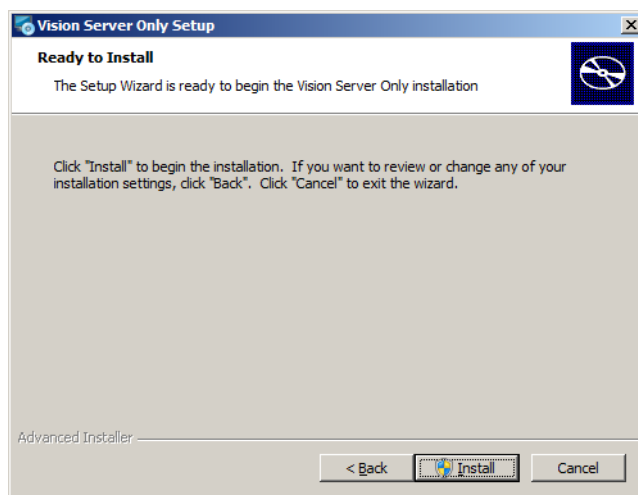
- 4 Confirm this message and click on **[Next]**.



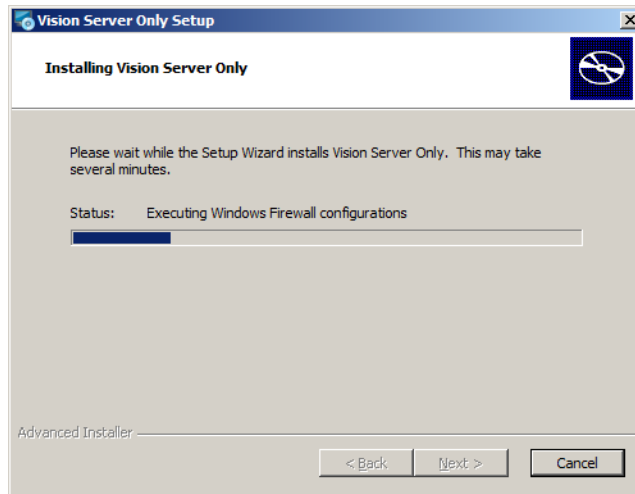
5 Vision Server installation begins as shown. Click on **[Next]**.



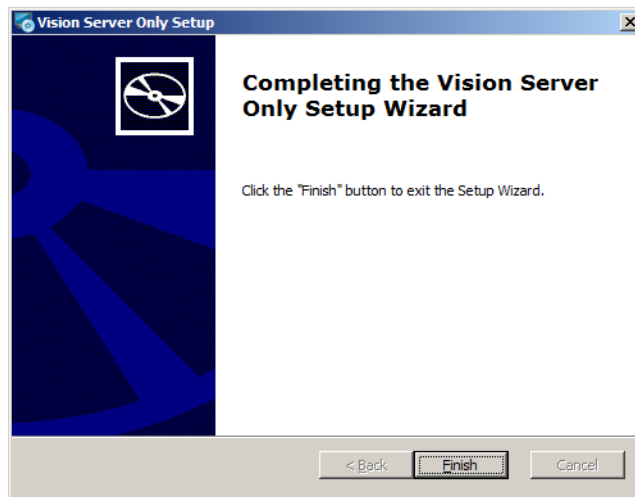
6 Click on **[Install]** to continue.



7 Wait for the installation of Vision.



8 Click on **[Finish]**.



## 2.2 Client installation for SingleUser and MultiUser

Follow these instructions to complete the Vision client installation:

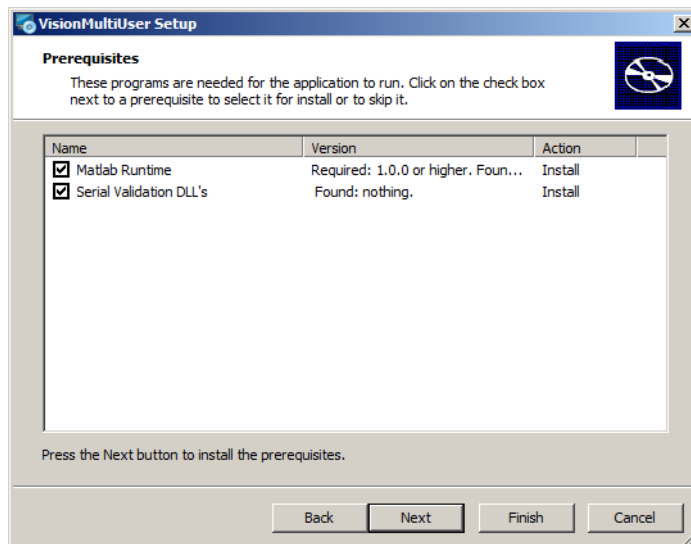
- 1 If replacing an earlier Vision installation, do not uninstall the existing Vision software. The new Vision installation preserves all projects and database structures in the existing Vision and operates in an updated manner using existing projects and files.
- 2 Insert the Vision "Installation" CD into the CD drive. This screen is displayed:



Click on **[Next]** to continue the installation.

**3** Select the box "Serial Validation DLL's".

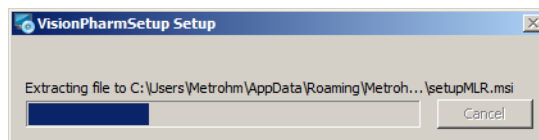
If using a DS2500 Analyzer, Matlab must be installed before Vision.

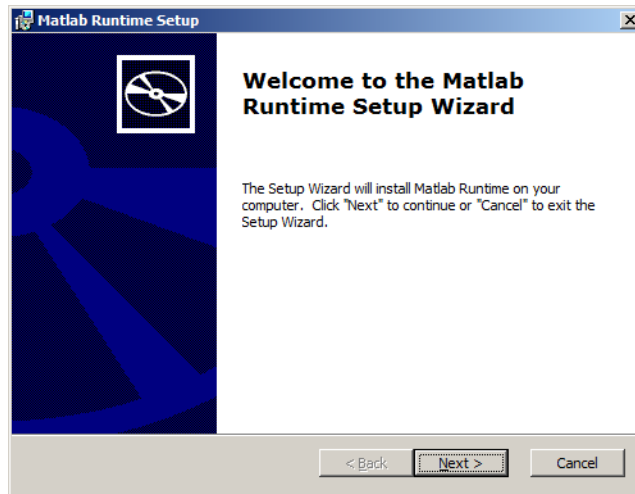


If a DS2500 is used, select the box for "Matlab Runtime", click on **[Next]** and continue with the next step.

If no DS2500 is used, click only on **[Next]** and skip directly to step 17.

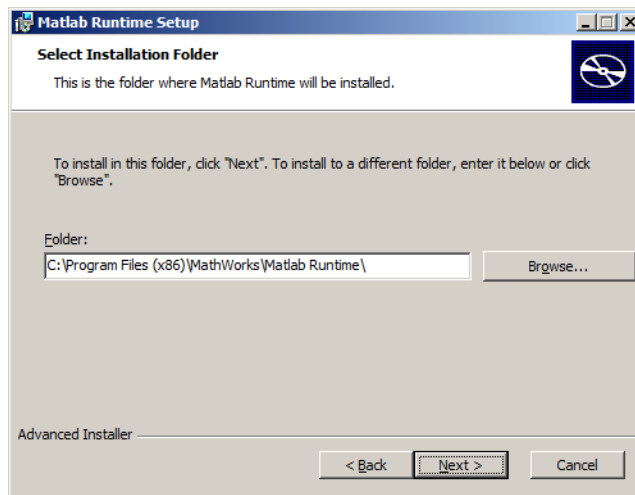
**4** This screen is displayed:



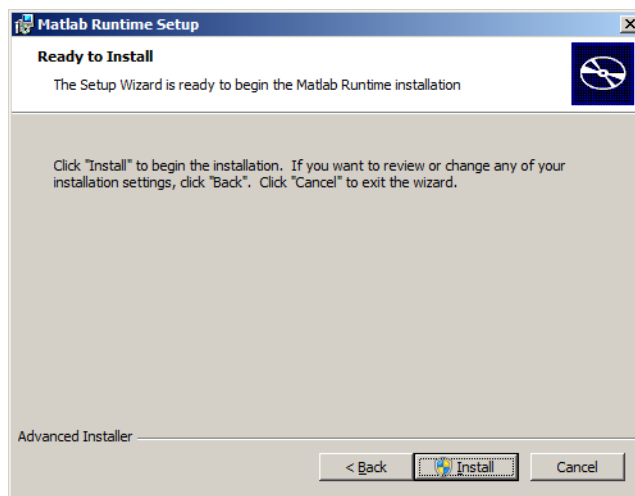


Click on **[Next]** to continue the installation.

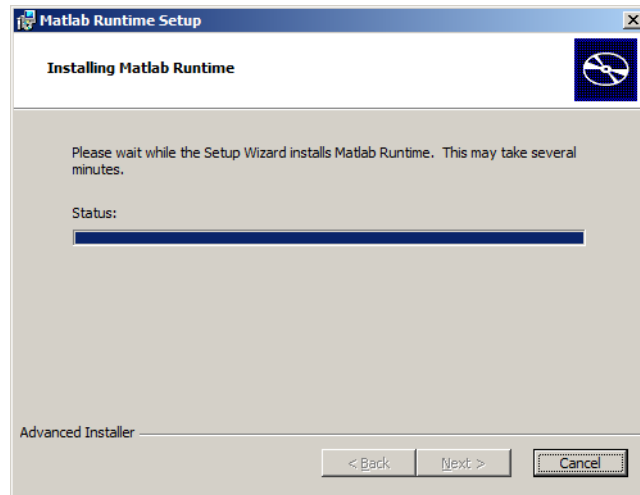
**5** At this screen, click on **[Next]**.



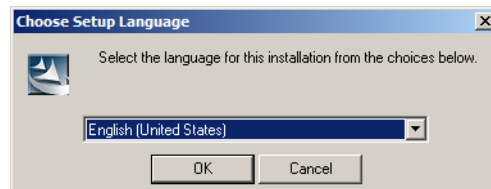
**6** At this screen, click on **[Install]**.



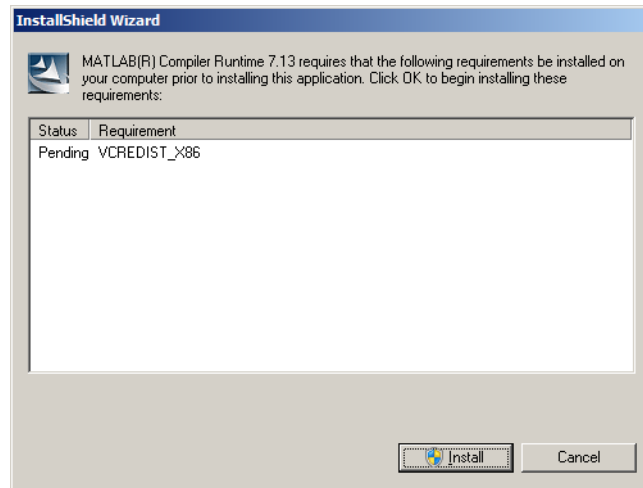
7 This screens will be displayed:



8 Choose your local language, and click on **[OK]**.

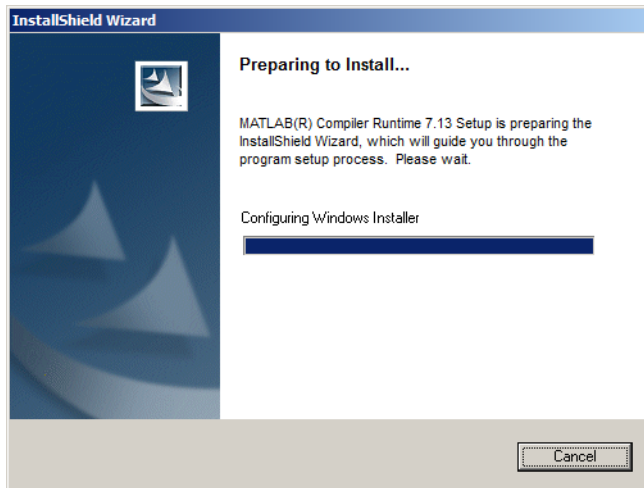


9 The InstallShield Wizard opens. Click on **[Install]**.

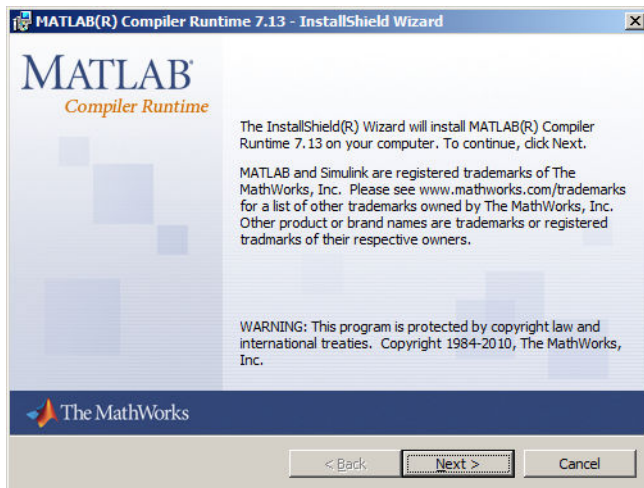


10 This screen is displayed to show progress. No action is needed.

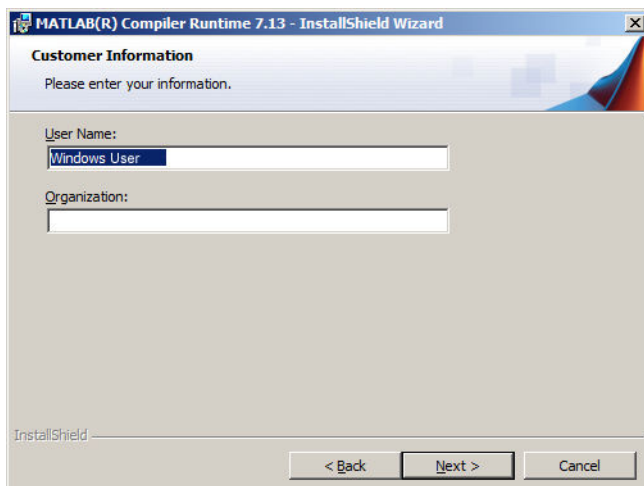




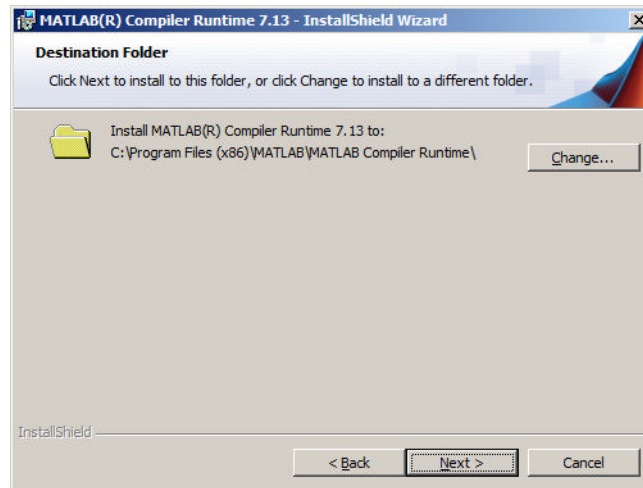
**11** The Matlab Compiler is displayed. Click on **[Next]**.



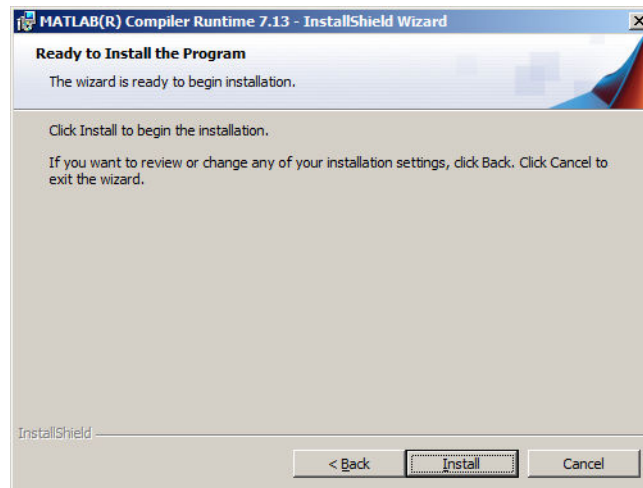
**12** This screen is displayed. Click on **[Next]**.



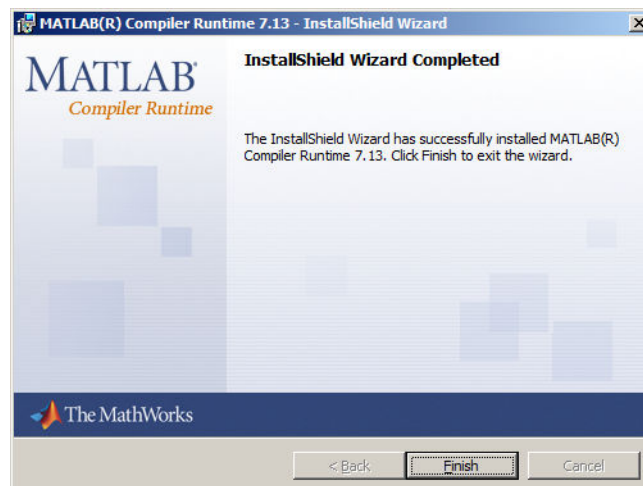
**13** Click on **[Next]**.



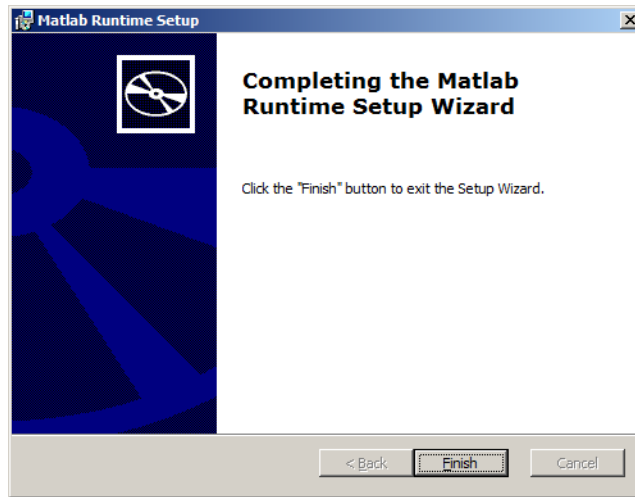
14 Click on **[Install]**.



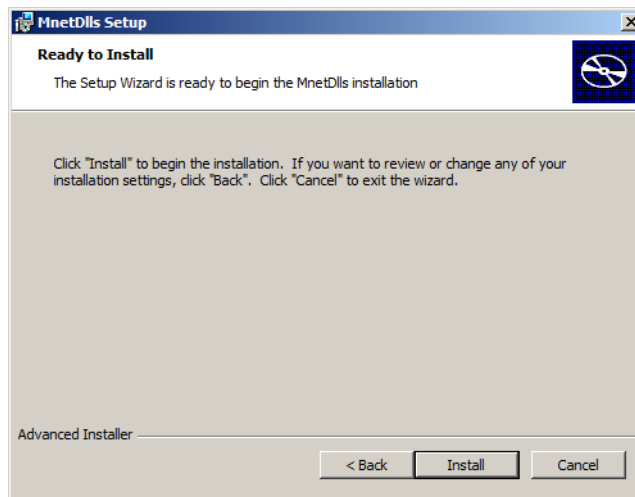
15 When Matlab is installed, this screen is displayed. Click on **[Finish]**.



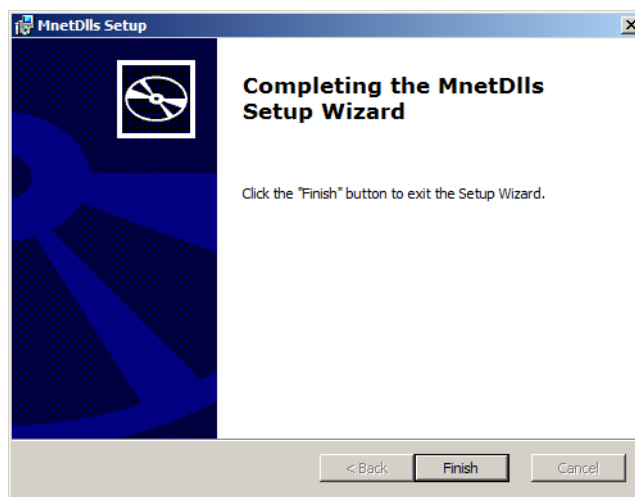
16 Click on **[Finish]**.



**17** Click on **[Install]**.

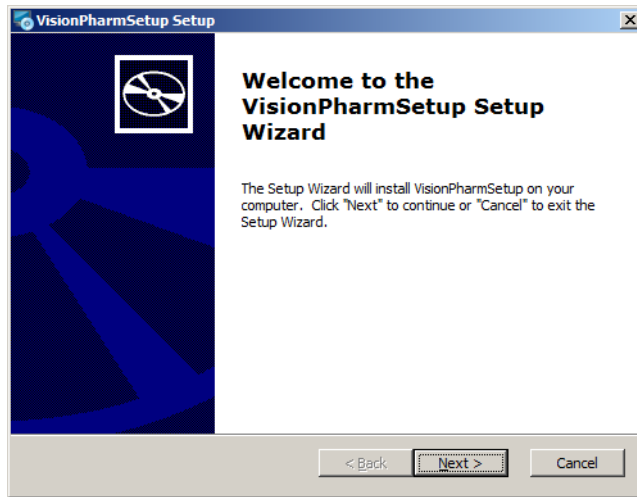


**18** Click on **[Finish]**.



**19** Click on **[Next]**.

Now the installation part of Vision software is starting.



- 20 Fill in the fields with user name, the organisation and the serial number.

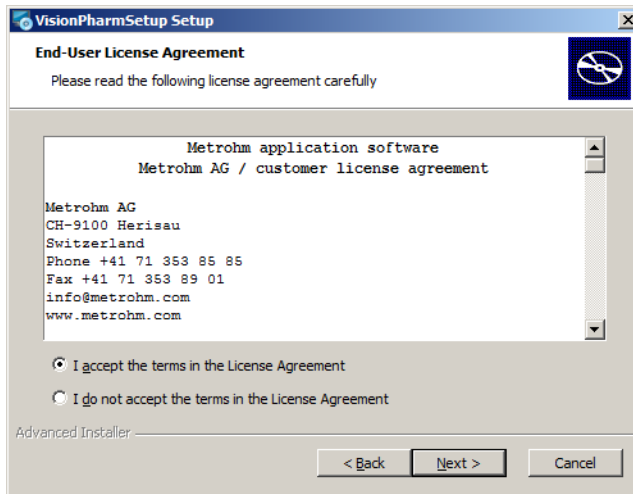


#### NOTICE

The serial number is printed on the CD label.

Click on **[Next]** to continue the installation.

- 21 Read and accept the License Agreement and click on **[Next]** to continue the installation.



22

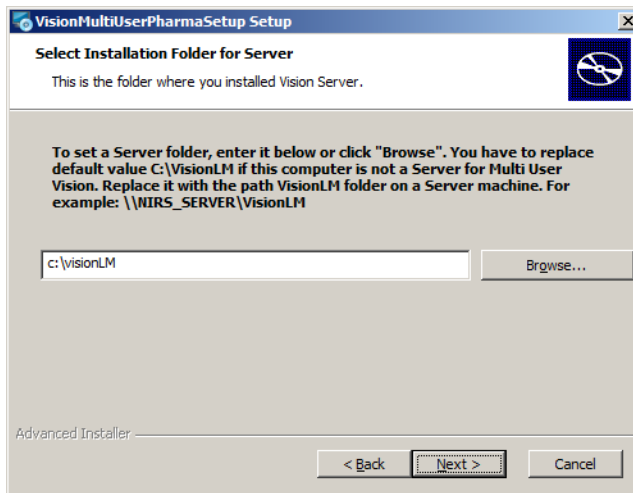


## NOTICE

### Client installation for MultiUser

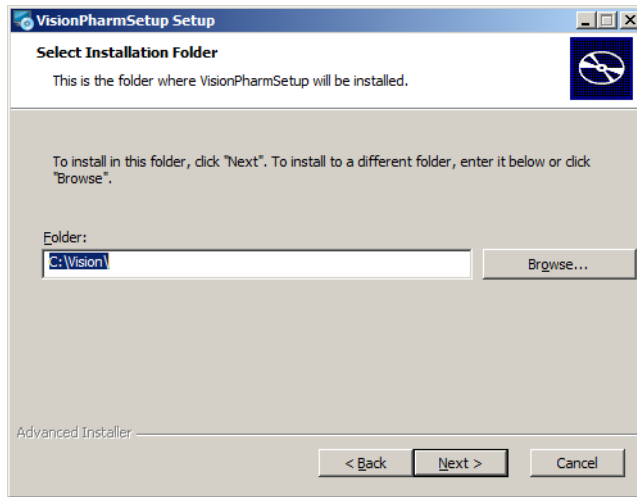
This step occurs only in conjunction with the server installation.

Database of the server with the appropriate path of Vision software must be entered in the input field (see the example on the screenshot).

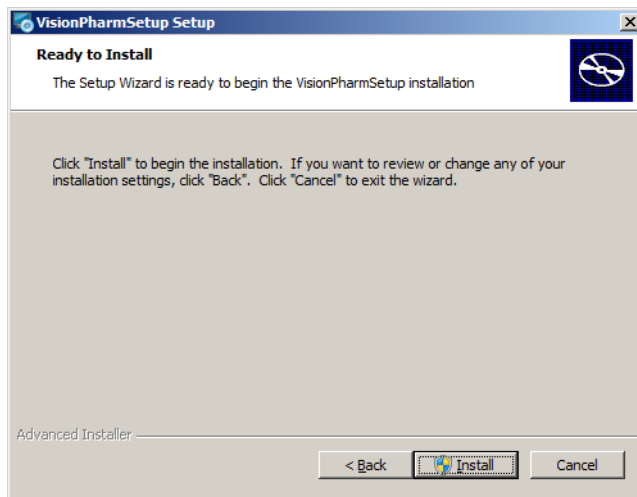


Click on **[Next]** to continue the installation.

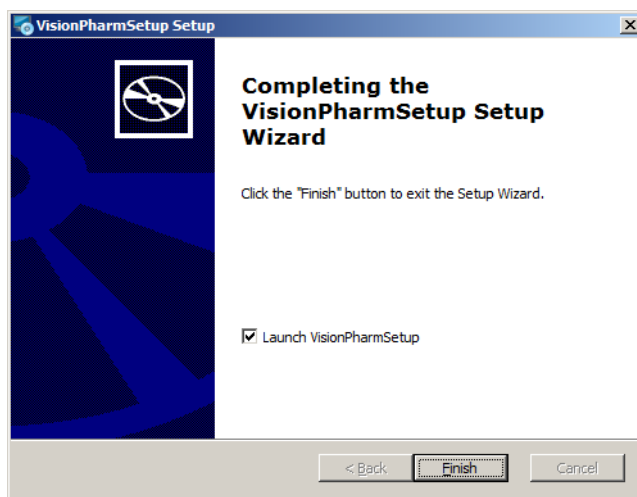
23 Click on **[Next]**.



24 Click on **[Install]**.



25 Click on **[Finish]**.

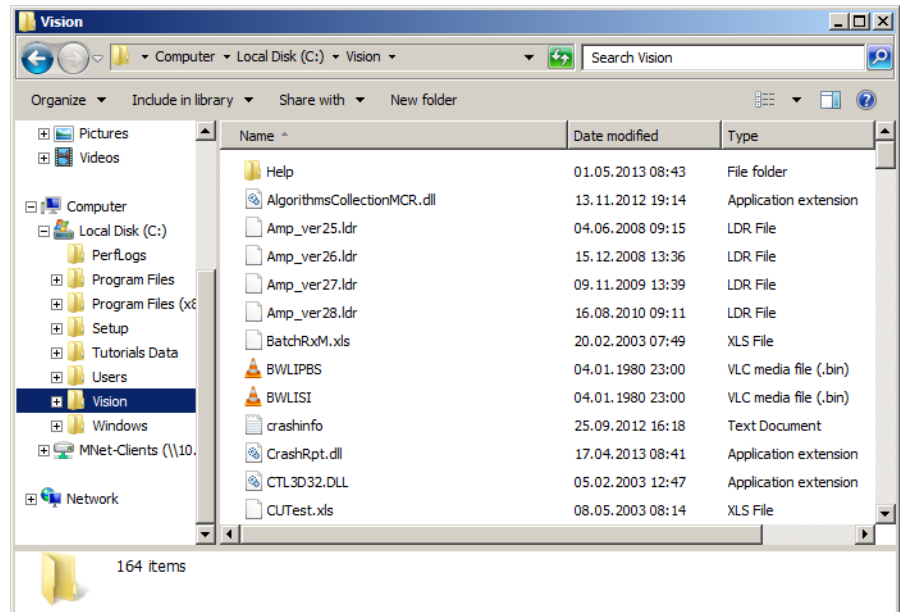


### 3 User rights for Vision

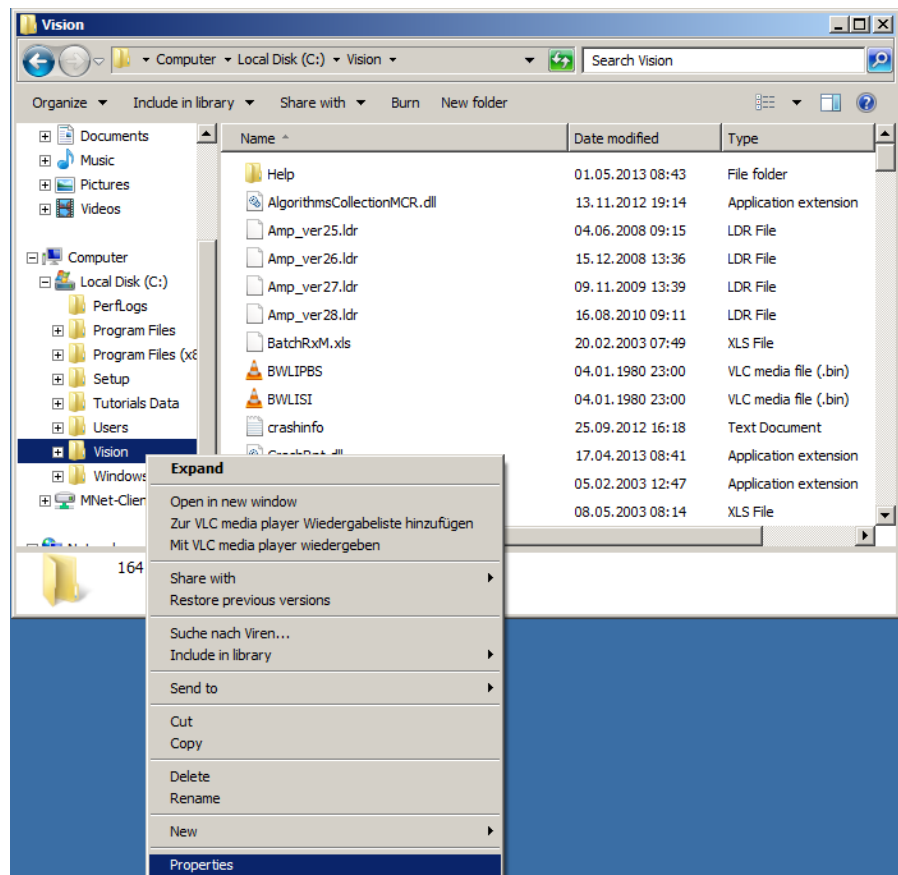
To run Vision software properly it is very important to have full access rights in Vision program directory and all subdirectories and files underneath.

This is how you can check if you have full access rights.

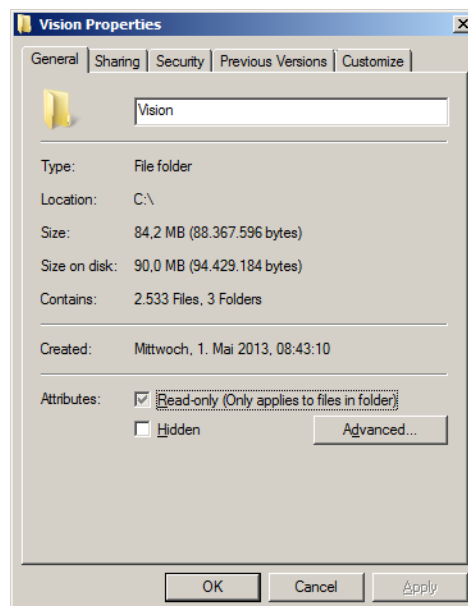
- 1 In Windows Explorer, navigate to Vision program directory. (This is directory where Vision is installed) By default it is c:\vision.



- 2 Select Vision program directory in the menu tree.
- 3 Right click on Vision program directory and select menu **[Properties]**

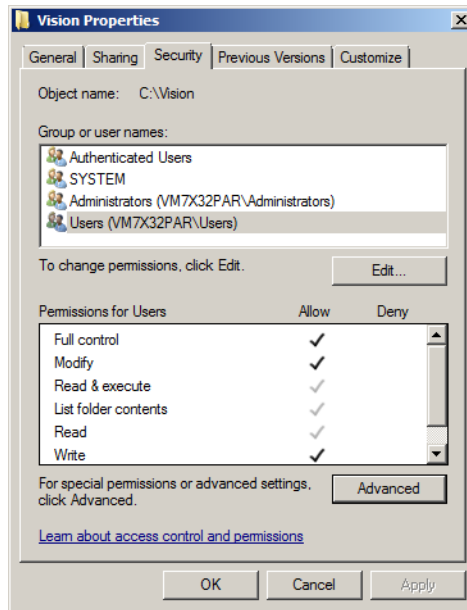


- 4 In Properties dialog select Tab Security. If the tab is not available, it means you do not have sufficient rights in Windows. You can not run Vision software.

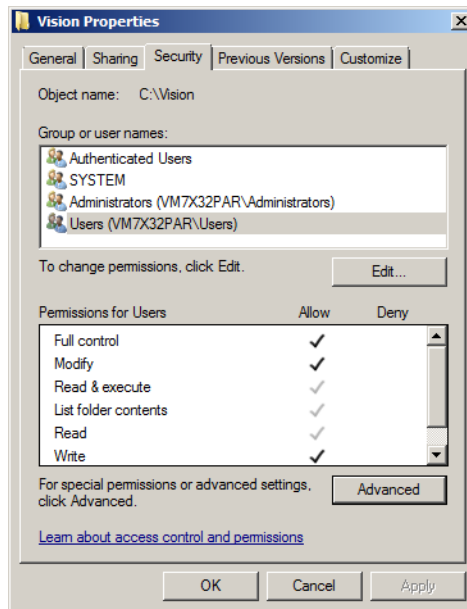


- 5 In Security Tab select a user which is logged-in in Windows right now. If user is not listed, select a group to which this user belongs.

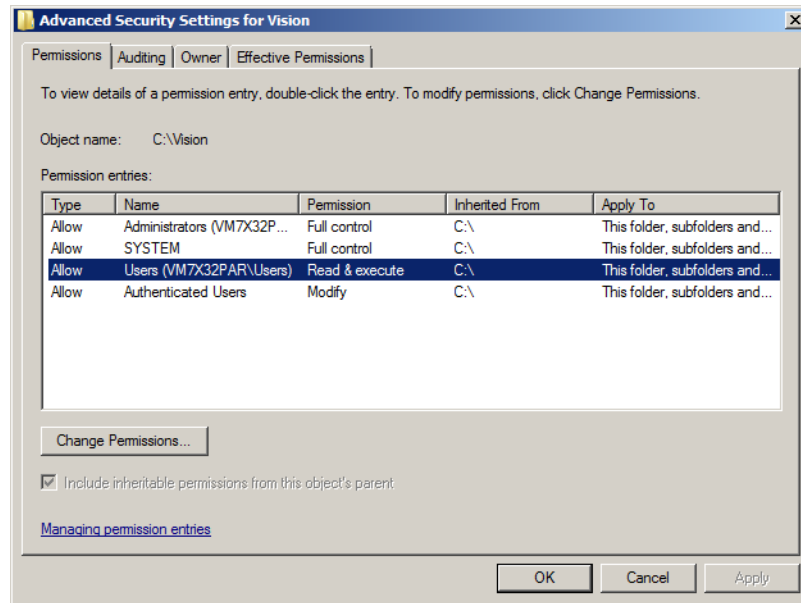




6 Look at permissions for selected user. User must have full access rights.



7 Click on **[Advanced]** underneath permissions list. Select a user who is logged-in in Windows right now or a user group where this user belongs if user is not listed separately.



- 8** This user should have full access rights applied to “This folder, subfolders and files”.

If the steps do not apply and you can not change the settings, talk to your IT department to gain required permission.

Vision also requires the same full control for vision.ini and sys3.ini (in case of XDS instrument) in Windows directory. Windows directory is usually c:\windows.

To check if you have full access rights over those files follow steps from 1 to 9.

If users create their projects and libraries in locations other than default Vision location in vision directory, those projects and libraries directories also have to have full access permissions for current Windows user. To check that follow steps from 1 to 9 again.

If you do not have sufficient rights to run Vision, following symptoms can occur:

Frequent crashes, error messages about not being able to open certain files (like vision.ini and sys3.ini), error messages about not being able to access DCM, certain projects, libraries, security database, diagnostics database, and so on.