



Application Note AN-RS-019

# SERS Detection of Metanil Yellow in Turmeric

## Protecting consumer safety with Misa

Metanil yellow (MY) is an azo dye used in the manufacture of external-use products such as textiles; however, it is prohibited from use as a food additive in many countries. Toxicology studies demonstrate that ingestion of MY results in significant neurological and multi-organ damage. Despite these hazards, MY is commonly used as an illicit colorant for enhancing the visual appeal of spices and legumes, most notably

turmeric. Given the rising popularity of turmeric as a dietary supplement promising significant health benefits, routine safety tests must be readily available to ensure the integrity of turmeric-containing products. Ideal tests feature methods that are selective and sensitive, yet portable and convenient. Misa (Metrohm Instant SERS Analyzer) achieves rapid and accurate detection of MY in a facile assay format.

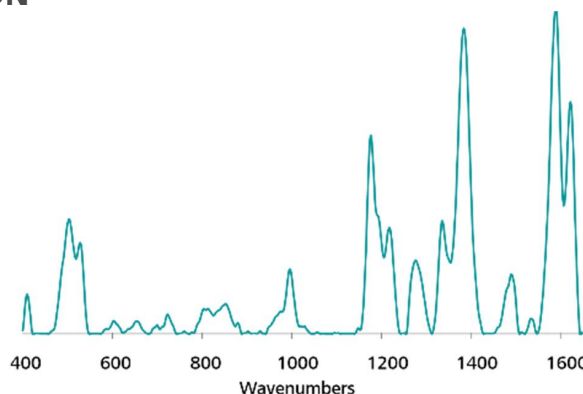
## INTRODUCTION

Misa is a versatile analytical tool for detecting banned colorants in foods. This application note details a

simple, conservative extraction procedure for the detection of MY in turmeric.

## REFERENCE MATERIAL AND LIBRARY CREATION

To establish a reference spectrum for MY, a pure standard in 50 mmol/L HCl is analyzed using gold nanoparticles (Au NPs). The unique SERS spectrum presented in **Figure 1** can be used to create a library entry for MY.



**Figure 1.** Standard Au NP SERS spectrum of Metanil Yellow.

## EXPERIMENT

For simulated testing of MY in turmeric, solid MY was mixed thoroughly with commercially bought turmeric powder to yield a concentration range of spiked samples: 10 and 1 mg/g, 100 and 50 µg/g. MY was extracted by the addition of 1 mL 0.5 mol/L HCl to 100 mg of each sample in a glass vial. This suspension was shaken and allowed to settle for 10 minutes. Test samples were prepared by pipetting 100 µL of the HCl extract into vials containing 800 µL of Au NPs and 100 µL of 0.5 mol/L NaCl. Each vial was inverted to combine the components and then inserted into the vial attachment on Misa for analysis.



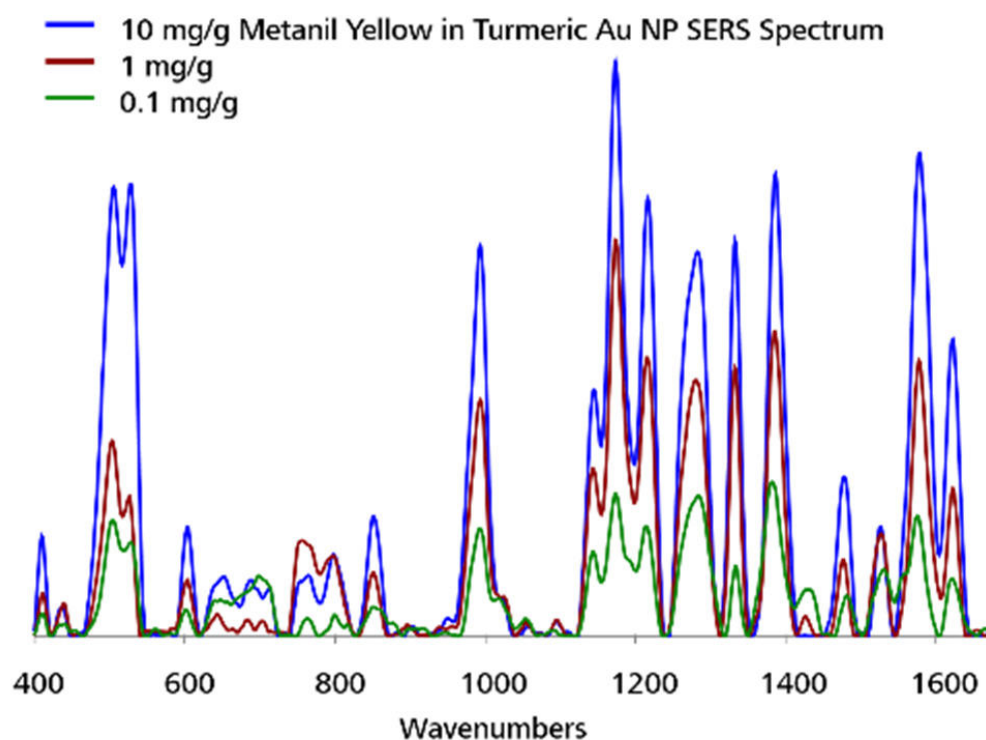
**Table 1.** Experimental parameters

| Instrument           |                  | Acquisition |      |
|----------------------|------------------|-------------|------|
| Firmware             | 0.9.33           | Laser Power | 5    |
| Software             | Misa Cal V1.0.15 | Int. Time   | 10 s |
| Misa Vial Attachment | 6.07505.040      | Averages    | 10   |
| ID Kit - Au NP       | 6.07506.440      | Raster      | ON   |

## RESULTS

Overlaid baseline-corrected spectra acquired for the spiked samples demonstrate detection of MY down to 0.1 mg/g (Figure 2). Reliable detection is based on

prominent peaks at 504, 1176, 1383, and 1588  $\text{cm}^{-1}$  in the spectrum.



**Figure 2.** Detection range of MY with Misa and Au NPs.

## FIELD TEST PROTOCOL

### Detection of Metanil Yellow in the field

Using the large end of the scoop, add 3–4 scoops of sample to a 2 mL vial. Add HCl solution to the vial until halfway full. Cap and shake the vial gently to mix, and let sample rest for 5 minutes. Fill a *clean vial* halfway

full with Au NPs. Using pipettes, add 2 drops each of sample solution and NaCl solution to the Au NPs, then cap and shake the vial gently to mix. Insert into vial attachment on Misa for measurement.

**Table 2.** Requirements for field test protocol

|                |                            |
|----------------|----------------------------|
| ID Kit - Au NP | 6.07506.440                |
| includes:      | Gold nanoparticles (Au NP) |
|                | Scoop                      |
|                | Disposable pipettes        |
|                | 2 mL glass vials           |
| Reagents       |                            |
| HCl solution   | 4 mL HCl in 100 mL water   |
| NaCl solution  | 3 g NaCl in 100 mL water   |
| Test settings  | Use ID Kit OP on MISA      |

## CONCLUSION

The rapid detection of MY in adulterated turmeric is demonstrated using Misa and Au NPs. This assay requires minimal user training, making it ideal for cost-effective, on-site QC testing in large food processing facilities, as well as distribution and receiving centers. Recently, the sensitive detection of

MY in dal, a yellow split pea commonly used in Indian cuisine, with Metrohm Raman's portable Sierra spectrometer suggests potential for using Misa to screen a wide variety of foods prized for their intense yellow coloration.

## CONTACT

Metrohm Schweiz AG  
Industriestrasse 13  
4800 Zofingen

[info@metrohm.ch](mailto:info@metrohm.ch)

## CONFIGURATION



### MISA Advanced

Metrohm Instant SERS Analyzer (MISA) ist ein hochleistungsfähiges, tragbares Analysensystem zur schnellen Detektion / Identifizierung von illegalen Substanzen, Lebensmittelzusatzstoffen und Lebensmittelverunreinigungen im Spurenbereich. MISA verfügt über einen hocheffizienten Spektrographen, der mit der einzigartigen Orbital-Raster-Scan (ORS)-Technologie von Metrohm ausgestattet ist. Er hat einen minimalen Platzbedarf und eine verlängerte Batterielebensdauer, perfekt für Tests vor Ort oder mobile Laboranwendungen. MISA bietet verschiedene Laser-Klasse-1-Aufsätze für flexible Probenahmeoptionen. Der Betrieb des Analysators ist über BlueTooth oder USB-Konnektivität möglich.

Das MISA Advanced-Paket ist ein Komplettpaket, das es dem Anwender ermöglicht, SERS-Analysen mit Metrohms Nanopartikelösungen und P-SERS-Streifen durchzuführen.

Das MISA Advanced-Paket enthält einen MISA Vial-Aufsatz, einen P-SERS-Aufsatz, einen ASTM-Kalibrierstandard, ein USB-Minikabel, ein USB-Netzteil und die MISA Cal-Software zum Betrieb des MISA-Geräts. Ein robuster Schutzkoffer zur sicheren Aufbewahrung des Instruments und des Zubehörs wird ebenfalls mitgeliefert.



### ID Kit – Au NP

Das ID Kit - Au NP enthält die Komponenten, die ein Mira/Misa-Benutzer benötigt, um eine SERS-Analyse mit kolloidaler Goldlösung durchzuführen. Der Kit enthält einen Einwegspatel, eine Tropfpipette, Probenfläschchen und eine Flasche mit Gold-Kolloid