



Application Note AN-V-214

Lead in drinking water

Straightforward determination by voltammetry using a gold microwire electrode

Lead is known to be highly toxic to humans as it interferes with enzyme reactions. Chronic lead poisoning can be caused by Pb leaching into drinking water from piping systems. The current provisional guideline for lead in the World Health Organization's «Guidelines for Drinking-water Quality» sets a maximum concentration of 10 µg/L.

With a limit of detection (LOD) of 0.2 µg/L, anodic stripping voltammetry using the scTRACE Gold is a viable, less sophisticated alternative to atomic absorption spectroscopy (AAS) to determine lead in drinking water. While AAS (and competing methods)

can only be performed in a laboratory, anodic stripping voltammetry can be used conventionally in the laboratory with the Metrohm 884 Professional VA or alternatively in the field with the 946 Portable VA Analyzer.

The determination is carried out on a silver film applied to the scTRACE Gold electrode. It is a combined sensor consisting of a gold microwire working electrode, Ag/AgCl reference electrode, and carbon auxiliary electrode on a ceramic substrate. It is easy to handle and needs no extensive maintenance such as mechanical polishing.

EXPERIMENTAL

The water sample is pipetted into the measuring vessel. Citric acid buffer is added as supporting electrolyte. The determination of lead can be carried out on the 946 Portable VA Analyzer or on the 884 Professional VA using the scTRACE Gold sensor via anodic stripping voltammetry using the parameters listed in **Table 1**. The lead concentration is determined by two additions of lead standard addition solution.

The scTRACE Gold is modified with a silver film prior to the determination of lead. The silver film is electrochemically deposited from a silver solution.



Figure 1. 946 Portable VA Analyzer

EXPERIMENTAL

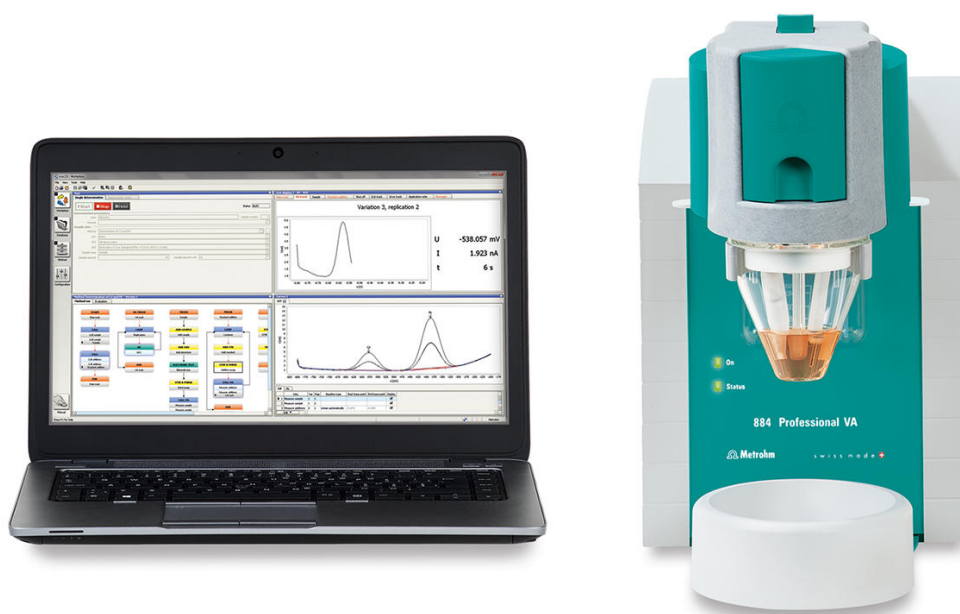


Figure 2. 884 Professional VA

Table 1. Parameters

Parameter	Setting
Mode	SQW – Square wave
Deposition potential	-0.7 V
Deposition time	90 s
Start potential	-0.7 V
End potential	0 V
Peak potential Pb	-0.48 V

RESULTS

The method is suitable for the determination of lead concentrations in unpolluted water samples in

concentrations up to 30 µg/L. The limit of detection of the method is approximately 1 µg/L.

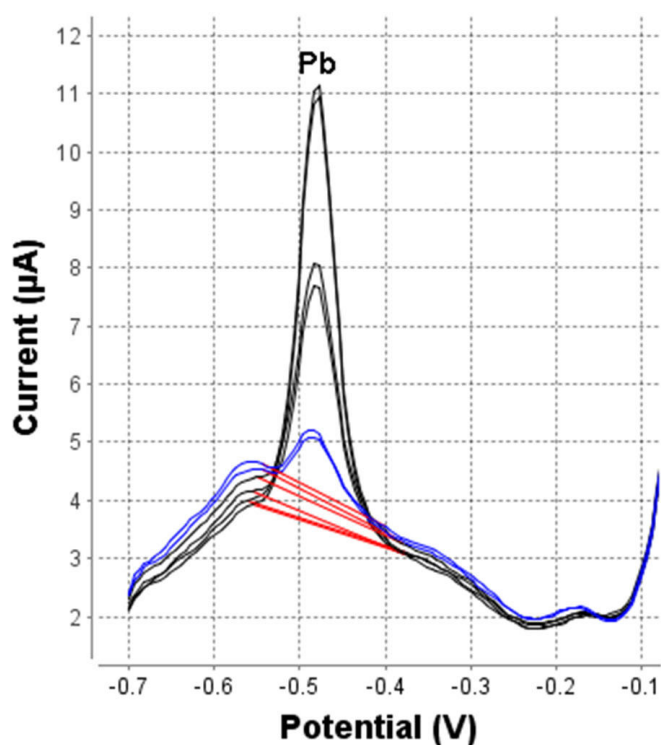


Figure 3. Determination of lead in tap water with 2 standard additions

Table 2. Result

Sample	Concentration [$\mu\text{g/L}$]
Tap water	1.1

REFERENCES

Application Bulletin 433: Determination of lead in water with the scTRACE Gold modified with a silver film

Internal reference: AW CH4-0587-092019

CONTACT

Metrohm Middle East FZC
B2-21 SAIF Zone, Sharjah,
UAE
120747 Sharjah

info@metrohm.ae

CONFIGURATION



884 Professional VA manual for Multi-Mode Electrode (MME)

884 Professional VA manual for Multi-Mode Electrode (MME) is the entry-level instrument for high-end trace analysis with voltammetry and polarography with the Multi-Mode Electrode pro or the scTRACE Gold or the Bismuth drop electrode. The proven Metrohm electrode methods in combination with a high-performance potentiostat/galvanostat and the extremely flexible viva software open up new perspectives for the determination of heavy metals. The potentiostat with a certified calibrator readjusts itself automatically before each measurement, thus guaranteeing maximum precision.

Determinations with rotating disc electrodes can also be performed with the instrument, e.g. determinations of organic additives in electroplating baths with "Cyclic Voltammetric Stripping" (CVS), "Cyclic Pulse Voltammetric Stripping" (CPVS), and chronopotentiometry (CP). The replaceable measuring head enables rapid changes between the various applications with different electrodes.

The **viva** software is required for control, data collection, and evaluation.

The 884 Professional VA manual for MME is supplied with extensive accessories and a measuring head for the Multi-Mode Electrode pro. Electrode set and **viva** license need to be ordered separately.



VA electrode equipment with scTRACE Gold for Professional VA instruments

Complete electrode set for the determination of arsenic or mercury. Includes holders for scTRACE Gold, scTRACE Gold, stirrer and measuring vessel.



946 Portable VA Analyzer (scTRACE Gold)

Portable metal analyzer for the determination of heavy metals such as arsenic, mercury, copper, lead, zinc, nickel, cobalt, iron, bismuth or antimony in the trace range. Instrument version for the scTRACE Gold. The system is comprised of potentiostat and separate measuring stand with integrated stirrer and replaceable electrode. The instrument is operated with the Portable VA Analyzer software. The power is supplied via the USB connector and via the integrated rechargeable battery. The instrument is supplied with all required accessories in a carrying case.