



Application Note AN-PAN-1049

# Online determination of bromate and other disinfection byproducts in drinking & bottled water with IC

In the past, drinking water disinfection was carried out by chlorination until it was discovered in the 1970s that disinfection byproducts (DBPs) such as carcinogenic trihalomethanes are formed during this process. Therefore, scientists searched for alternative disinfection techniques to minimize the amount of harmful compounds created.

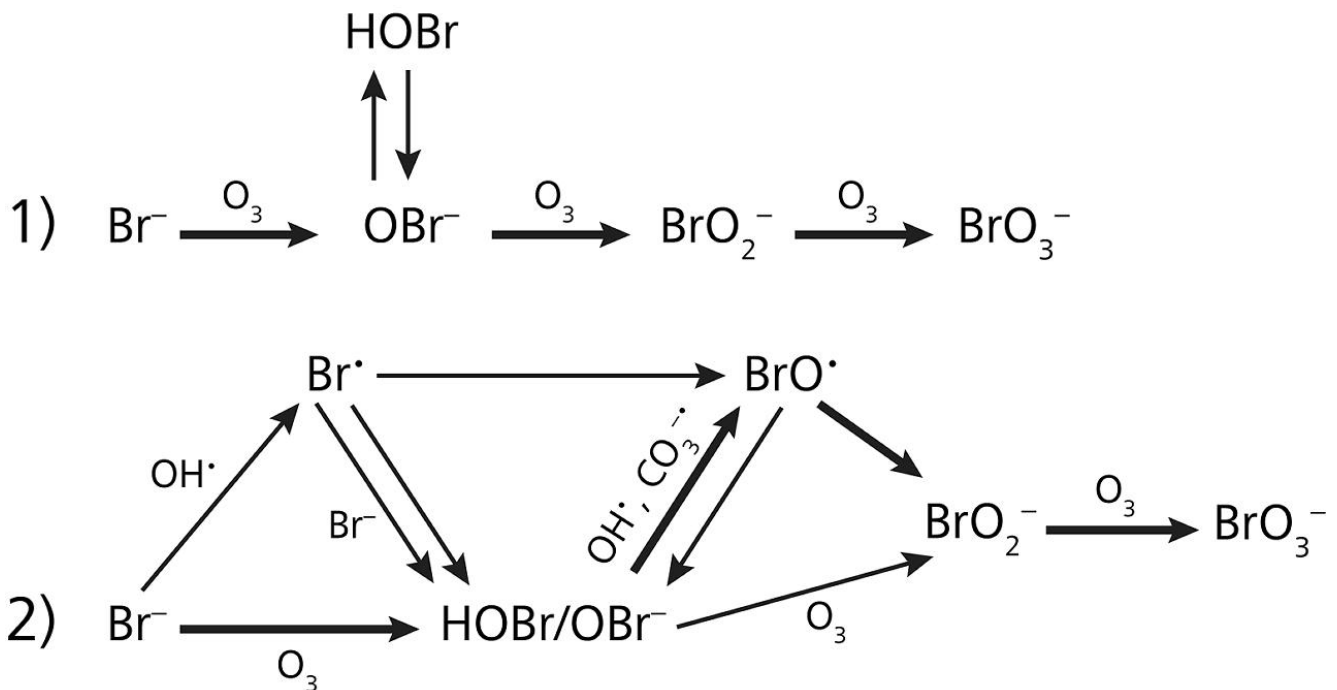
The promising alternative to chlorination is UV light

treatment or ozonation, a chemical water treatment technique based on the infusion of ozone ( $O_3$ ) into water. This produces reactive oxygen species able to attack a wide range of organic compounds and all microorganisms. Unlike chlorine,  $O_3$  leaves no harmful chlorinated byproducts in the water, and quickly reverts to pure oxygen if unused.

In most cases, the raw water being processed

contains chloride and bromide. The latter is known to oxidize to the carcinogenic and nephrotoxic compound bromate ( $\text{BrO}_3^-$ ), which is an inorganic DBP. Considering this health risk, health and environmental protection agencies like the World

Health Organization (WHO) and the European Union have recommended a concentration limit of 10 g/L of  $\text{BrO}_3^-$  in drinking water.

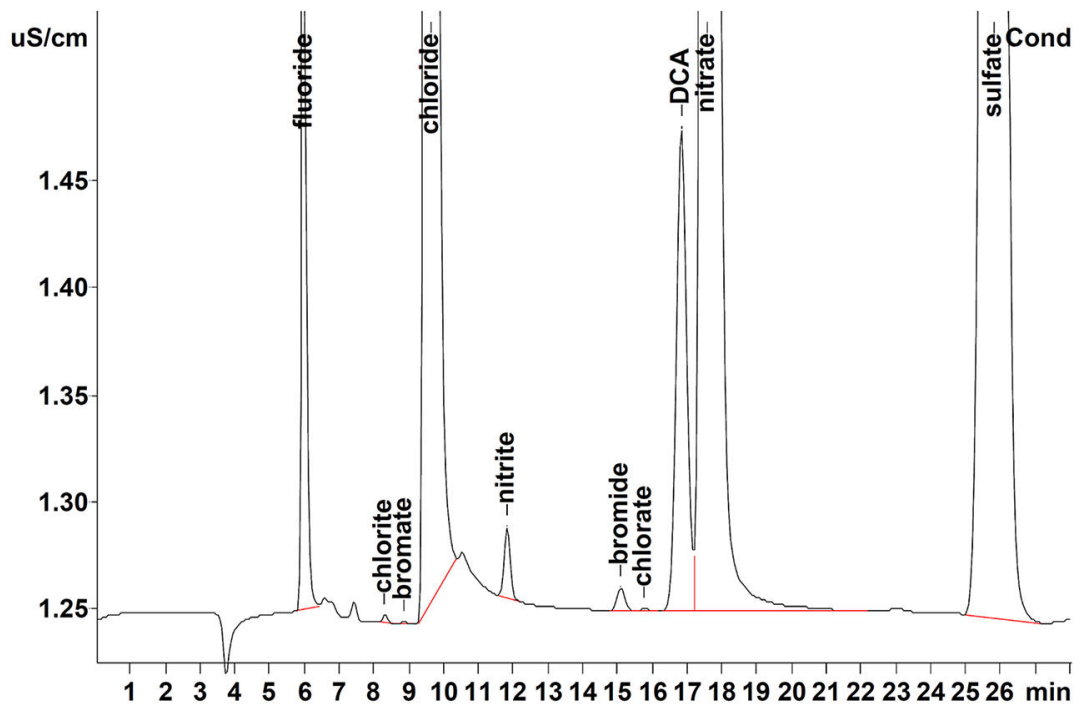


**Figure 1.** Mechanisms for the formation of bromate during ozonation.

The determination of DBPs such as bromate is crucial for drinking water utilities and beverage bottling companies. To determine trace levels of  $\text{BrO}_3^-$  in drinking water, ion chromatography is the foremost mentioned analytical method in standards and literature.

The 2060 Ion Chromatograph (IC) Process Analyzer from Metrohm Process Analytics is ideal for several

accepted methods such as EPA 300.1, 317.0, 321.8, 326.0, ASTM D6581, ISO 11206, and ISO 15061. It is able to continuously measure and monitor **bromate and other anions** in drinking water at a  $\mu\text{g/L}$  level. Automated calibration guarantees excellent detection limits, a high reproducibility, and superior recovery rates.



**Figure 2.** Example chromatogram of bromate and other anions in drinking water.

## APPLICATION

Drinking water samples can be analyzed according to methods such as EPA 300.1, 317.0, 321.8, 326.0, ASTM D6581, ISO 10304-4, ISO 11206, and ISO 15061 with Metrohm Inline Sample Preparation (MISP) techniques for extra application flexibility. Analyte detection is by conductivity or UV/Vis.

The drinking water stream is sampled frequently, giving up-to-date information about the bromate concentration. The 2060 IC Process Analyzer can provide an alarm if pre-set warning or intervention concentration limits are reached, helping to save costs by preventing the release of an out-of-specification production batch of bottled water that then would require an expensive public recall. One 2060 IC has the possibility to connect to up to 20 sample streams, meaning multiple bottling lines or parts of the purification process could be monitored for impurities by a single instrument, saving time and money.

The 2060 IC Process Analyzer can run for extended periods in less-frequented areas, as there is adequate space in the reagent cabinet for reagents, ultrapure water and/or prepared eluent. Contactless reagent level sensors ensure that you are always alerted when liquid levels are low. By choosing a built-in eluent production module and optional PURELAB® flex 5/6 from ELGA® for continuous pressureless ultrapure water supply, the 2060 IC Process Analyzer can be configured to run even trace analyses, such as for bromate, autonomously.

## REMARKS

ISO 11206 (reference [AN-U-051](#)) involves a postcolumn reaction with potassium iodide, followed by detection in the UV range. This improves the sensitivity for  $\text{BrO}_3^-$  as compared to EPA 300.1, ISO 10304-4, and ISO 15061. With this method, the European maximum limit of 3 g/L for bromate in



**Figure 3.** The 2060 IC Process Analyzer is available with either one or two measurement channels, along with integrated liquid handling modules and several automated sample preparation options. This configuration is depicted with two measurement channels (conductivity) and an optional ELGA PURELAB® flex 5/6.

natural mineral and spring waters disinfected by ozonation can be met.

The 2060 IC Process Analyzer can also be configured to measure other oxyhalides, anions, and cations according to **ISO 10304-1**, **ISO 14911**, **ASTM D4327**, and **ASTM D6919**.

## BENEFITS FOR IC IN PROCESS

- **Online eluent preparation** ensures consistently stable baselines
- **Ensure regulatory compliances** for safe drinking water
- **Automated sampling and calibration** to guarantee excellent detection limits, a high reproducibility, and superior recovery rates
- **High precision analyses** for a wide spectrum of analytes with multiple types of detectors



---

## FURTHER READING

### Related application notes

[TA-004 Trace determination of bromate in water](#)

[AN-S-047 Bromide and sulfate in a pharmaceutical product](#)

[AN-U-051 Trace bromate in drinking water –](#)

[Determination according to ISO 11206](#)

[AN-M-015 Trace haloacetic acids, dalapon, and bromate in water – Determination as per US EPA 557 applying IC-MS/MS](#)

## CONTACT

Metrohm India  
Annai Indira Nagar,  
Thoraipakkam  
600097 Chennai

[info@metrohm.in](mailto:info@metrohm.in)

## CONFIGURATION



### 2060 IC Process Analyzer

The **2060 Ion Chromatograph (IC) Process Analyzer** from Metrohm Process Analytics is based on the modular 2060 platform concept. This modular architecture enables the separation of the cabinets in different locations around a plant and the connection to up to 20 sample streams for time-saving sequential analysis at multiple areas inside of a plant.

This analyzer has no limits in terms of hardware, software, and applications customization. From continuous eluent production module, wet part modules for sample conditioning, and multiple IC detector blocks, the 2060 IC Process Analyzer has all the options for any industrial application.

The 2060 software is an «all-in-one» software solution that controls the analyzer to perform routine analysis, with different operation methods, time sheets, and trend charts. Furthermore, thanks to the variety of process communication protocols (e.g. Modbus or Discrete I/O), the 2060 software is programmable to send automatic feedback and alarms to the process and take action if necessary (e.g., re-measure a sample, or start a cleaning cycle). All of these features ensure fully automatic diagnostics of the industrial process – around the clock, seven days a week.