



Application Note AN-V-230

# Chrome(VI) dans l'eau potable

## Sensitive determination on the mercury film modified scTRACE Gold (DTPA method)

The guideline value for total chromium in the World Health Organization's (WHO) «Guidelines for Drinking-water Quality» is 50 µg/L. Chromium(VI) is more toxic than its trivalent form (Cr(III)) and is also less abundant. Therefore a robust and sensitive method is required to monitor its concentration in drinking water.

The mercury film modified scTRACE Gold can be used to monitor chromium(VI), offering easy handling and a high grade of stability. The sensor itself contains all necessary electrodes: the gold micro-wire working

electrode, Ag/AgCl reference, and the carbon auxiliary electrode integrated on a ceramic substrate which does not need intensive maintenance like polishing. Adsorptive stripping voltammetry (AdSV) using diethylenetriaminepentaacetic acid (DTPA) as a complexing agent and catalytic signal enhancement allows chromium(VI) detection at very low levels, with a limit of detection of 2 µg/L. The ability to replate the mercury film allows a quick and easy regeneration of the sensor. This method is best suited for field applications.

## SAMPLE

Drinking water, mineral water, sea water

## EXPERIMENTAL

Prior to the first determination, the ex-situ mercury film is deposited on the scTRACE Gold electrode. In the next step, the electrodes are cleaned with ultrapure water and the measuring vessel is emptied. The water sample, the supporting electrolyte with the complexing agent (DTPA) are pipetted into the measuring vessel. The determination of chromium(VI) is carried out with a 946 Portable VA Analyzer using the parameters specified in **Table 1**. The concentration is determined by two additions of a chromium(VI) standard addition solution. The scTRACE Gold is electrochemically activated prior to the first determination.



**Figure 1.** 946 Portable VA Analyzer

**Table 1.** Parameters

Parameter	Setting
Mode	DP – Differential Pulse
Start potential	-1.15 V
End potential	-1.65 V
Peak potential Cr(VI)	-1.4 V

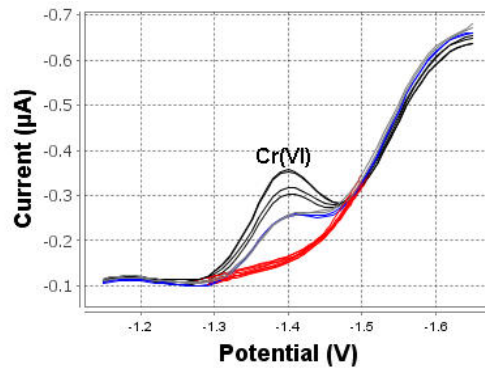
## ELECTRODES

- scTRACE Gold

## RESULTS

The method is suitable for the determination of chromium(VI) concentrations up to 40 µg/L. The limit

of detection without deposition time is approximately 5 µg/L.



**Figure 2.** Determination of chromium(VI) in tap water spiked with 30 µg/L

**Table 2.** Result

Sample	Cr(VI) (µg/L)
Tap water spiked with 30 µg/L Cr(VI)	32.1

Internal reference: AW VA CH4-0596-042020

## CONTACT

Metrohm Suisse SA  
 Industriestrasse 13  
 4800 Zofingen

[info@metrohm.ch](mailto:info@metrohm.ch)

## CONFIGURATION



### 946 Portable VA Analyzer (scTRACE Gold)

Analyseur de métaux portable pour déterminer les métaux lourds comme l'arsenic, le mercure, le cuivre, le plomb, le zinc, le nickel, le cobalt, le fer, le bismuth ou l'antimoine dans le domaine des traces. Version de l'appareil pour la scTRACE Gold. Le système comprend un potentiostat et un banc de mesure séparé avec agitateur intégré et électrode interchangeable. L'appareil fonctionne avec le logiciel du Portable VA Analyzer. L'alimentation électrique se fait par le connecteur USB et par la batterie rechargeable intégrée. L'appareil est livré dans une mallette contenant tous les accessoires nécessaires.