



Application Note AN-RS-023

Trace Detection of Aspartame in Beverages

Protecting consumer safety with Misa

Aspartame is an artificial sweetener touted as a diet-conscious alternative to sugar in beverage and food products. Some studies suggest that consumption of aspartame is correlated with increased risk for brain and hematopoietic cancers, however, the majority of studies find aspartame to be a safe food additive. Consequently, the US and EU approve aspartame as a multi-purpose sweetener with an acceptable daily intake of 40 mg/kg body weight/day. However, the

clear health hazard to individuals suffering from phenylketonuria and ongoing criticism by health food advocates continues to fuel the challenge against aspartame's widespread use in the food industry. Using Misa (Metrohm Instant SERS Analyzer), beverage products are screened for aspartame levels with no sample preparation beyond simple dilution of a consumer product.

INTRODUCTION

Misa is a versatile analytical tool for detecting additives in food products. This application note describes a facile method for the rapid and sensitive

detection of aspartame in carbonated water and diet cola.

REFERENCE SPECTRUM AND LIBRARY CREATION

To establish a reference spectrum for aspartame, a pure standard dissolved in water at a concentration of 1 mg/g is analyzed using gold nanoparticles (Au NPs).

The unique baseline-corrected spectrum shown in **Figure 1** can be used to create a library entry for aspartame.

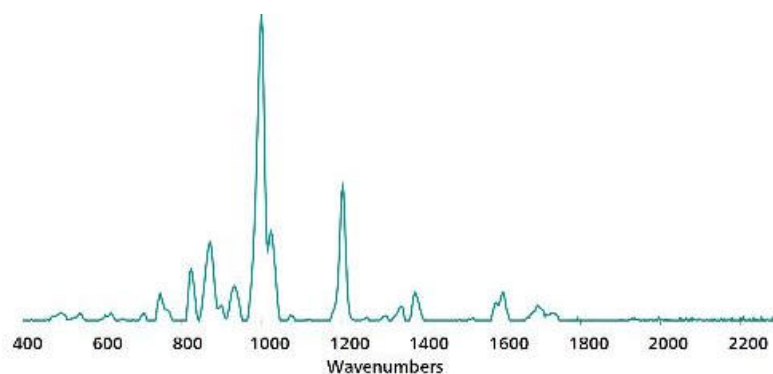


Figure 1. Standard SERS Au NP reference spectrum for aspartame in water.

EXPERIMENT

A stock solution of aspartame in water was used to spike carbonated water from a local grocer to create a concentration range of samples: 100, 50, 10, 5, and 1 µg/mL, and 100 ng/mL. For testing purposes, 100 µL of each sample was pipetted into a glass vial containing 800 µL of Au NPs and 100 µL of 0.5 mol/L NaCl. The contents were shaken to mix, and the vial was placed into the Misa vial attachment for spectral acquisition. Diet cola from the same vendor was subjected to a 10x dilution (1:9 cola:water) and analyzed using the same procedure. Dilution reduces spectral contribution from other ingredients in the cola matrix.



Table 1. Experimental parameters

Instrument		Acquisition	
Firmware	0.9.33	Laser Power	5
Software	Misa Cal V1.0.15	Int. Time	1 s
Misa Vial Attachment	6.07505.040	Averages	10
ID Kit - Au NP	6.07506.440	Raster	ON

RESULTS

Overlaid baseline-corrected SERS spectra acquired for carbonated water spiked with varying concentrations

of aspartame shows detection down to 100 ng/mL (Figure 2).

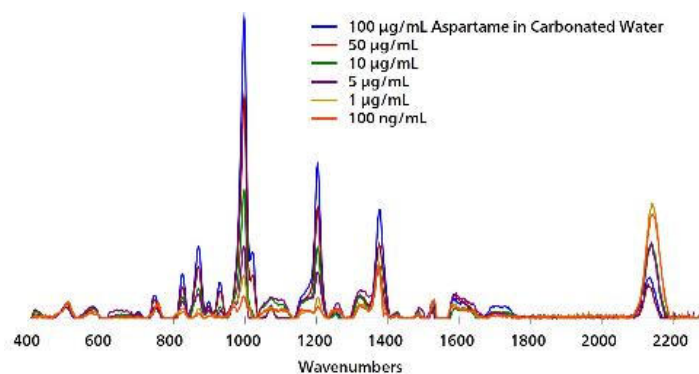


Figure 2. SERS Au NP concentration range for aspartame in carbonated water.

SERS analysis of 10x diluted diet cola with minimal processing provides high resolution detection estimated between 10–50 µg/mL, which is consistent

with typical concentrations of aspartame used to sweeten diet cola (e.g., 350 µg/mL).

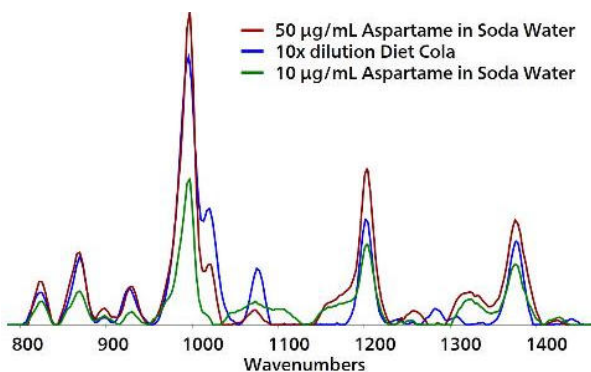


Figure 3. Detection of aspartame in 10x diluted diet cola.

FIELD TEST PROTOCOL

Detection of aspartame in the field

Using a pipette, add 1 drop of diet soda to a clean vial. Add 9 drops DI water to soda in vial, cap, and shake to mix. Fill a *clean vial* halfway full with Au NPs. Using pipettes, add 2 drops each of sample solution and

NaCl solution to Au NPs, then cap and shake the vial gently to mix. Insert into vial attachment on Misa for measurement.

Table 2. Requirements for field test protocol

ID Kit - Au NP	6.07506.440
includes:	Gold nanoparticles (Au NP)
	Scoop
	Disposable pipettes
	2 mL glass vials
Reagents	
DI water	
NaCl solution	3 g NaCl in 100 mL water
Test settings	Use ID Kit OP on MISA

CONCLUSION

The rapid and sensitive detection of aspartame in beverages is demonstrated using Misa and Au NPs. This assay demonstrates a quick and easy,

cost-effective and portable solution for detection of food additives in low-resource testing environments.

CONTACT

Metrohm Suisse SA
Industriestrasse 13
4800 Zofingen

info@metrohm.ch

CONFIGURATION



MISA Advanced

Metrohm Instant SERS Analyzer (MISA) est un système d'analyse portable hautement performant pour détecter ou identifier rapidement des traces de substances illicites, d'additifs et de contaminants alimentaires. MISA possède un spectrographe très efficace doté de la technologie ORS (Orbital Raster Scan) unique de Metrohm. Son encombrement est minimal et la durée de vie prolongée de la batterie en fait le système d'analyse idéal pour les tests sur site ou les applications de laboratoire mobiles. MISA propose divers accessoires laser de classe 1 pour des options d'échantillonnage flexibles. L'appareil d'analyse peut fonctionner via la connectivité Bluetooth ou USB.

Le module MISA Advanced est un ensemble complet qui permet à l'utilisateur d'effectuer des analyses SERS avec les solutions de nanoparticules de Metrohm et des bandelettes réactives P-SERS.

Le module MISA Advanced contient un embout de flacon MISA, un embout P-SERS, un standard de calibration ASTM, un câble USB mini, un bloc d'alimentation USB et le logiciel MISA Cal pour le fonctionnement de l'appareil MISA. Une mallette de protection robuste est également fournie pour ranger l'appareil et ses accessoires en toute sécurité.



Kit d'identification – Au NP

Le kit d'identification Au NP comprend les composants nécessaires à un utilisateur Mira/Misa pour une analyse SERS avec une solution d'or colloïdal. Le kit se compose d'une spatule à usage unique, d'une pipette compte-gouttes, d'un petit flacon d'échantillon et d'un flacon d'or colloïdal