



Application Note AN-RS-023

Trace Detection of Aspartame in Beverages

Protecting consumer safety with Misa

Aspartame is an artificial sweetener touted as a diet-conscious alternative to sugar in beverage and food products. Some studies suggest that consumption of aspartame is correlated with increased risk for brain and hematopoietic cancers, however, the majority of studies find aspartame to be a safe food additive. Consequently, the US and EU approve aspartame as a multi-purpose sweetener with an acceptable daily intake of 40 mg/kg body

weight/day. However, the clear health hazard to individuals suffering from phenylketonuria and ongoing criticism by health food advocates continues to fuel the challenge against aspartame's widespread use in the food industry.

Using Misa (Metrohm Instant SERS Analyzer), beverage products are screened for aspartame levels with no sample preparation beyond simple dilution of a consumer product.

INTRODUCTION

Misa is a versatile analytical tool for detecting additives in food products. This application note describes a facile method for the rapid and

sensitive detection of aspartame in carbonated water and diet cola.

REFERENCE SPECTRUM AND LIBRARY CREATION

To establish a reference spectrum for aspartame, a pure standard dissolved in water at a concentration of 1 mg/g is analyzed using gold

nanoparticles (Au NPs). The unique baseline-corrected spectrum shown in **Figure 1** can be used to create a library entry for aspartame.

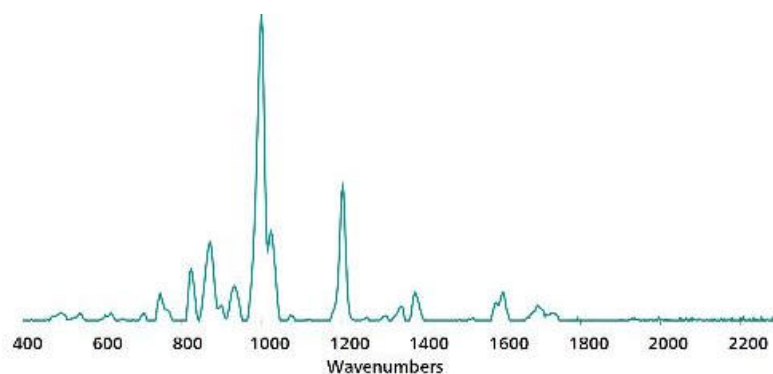


Figure 1. Standard SERS Au NP reference spectrum for aspartame in water.

EXPERIMENT

A stock solution of aspartame in water was used to spike carbonated water from a local grocer to create a concentration range of samples: 100, 50, 10, 5, and 1 $\mu\text{g/mL}$, and 100 ng/mL . For testing purposes, 100 μL of each sample was pipetted into a glass vial containing 800 μL of Au NPs and 100 μL of 0.5 mol/L NaCl. The contents were shaken to mix, and the vial was placed into the Misa vial attachment for spectral acquisition. Diet cola from the same vendor was subjected to a 10x dilution (1:9 cola:water) and analyzed using the same procedure. Dilution reduces spectral contribution from other ingredients in the cola matrix.



Table 1. Experimental parameters

Instrument		Acquisition	
Firmware	0.9.33	Laser Power	5
Software	Misa Cal V1.0.15	Int. Time	1 s
Misa Vial Attachment	6.07505.040	Averages	10
ID Kit - Au NP	6.07506.440	Raster	ON

RESULTS

Overlaid baseline-corrected SERS spectra acquired for carbonated water spiked with

varying concentrations of aspartame shows detection down to 100 ng/mL (Figure 2).

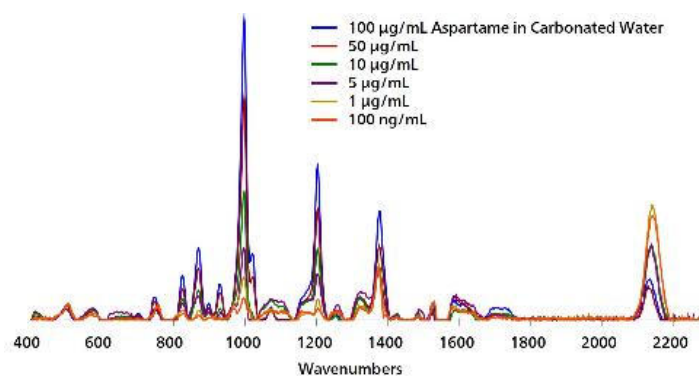


Figure 2. SERS Au NP concentration range for aspartame in carbonated water.

SERS analysis of 10x diluted diet cola with minimal processing provides high resolution detection estimated between 10–50 µg/mL,

which is consistent with typical concentrations of aspartame used to sweeten diet cola (e.g., 350 µg/mL).

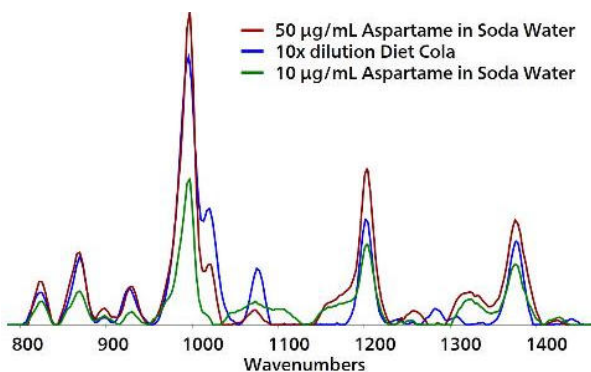


Figure 3. Detection of aspartame in 10x diluted diet cola.

FIELD TEST PROTOCOL

Detection of aspartame in the field

Using a pipette, add 1 drop of diet soda to a clean vial. Add 9 drops DI water to soda in vial, cap, and shake to mix. Fill a *clean vial* halfway full with Au NPs. Using pipettes, add 2 drops

each of sample solution and NaCl solution to Au NPs, then cap and shake the vial gently to mix. Insert into vial attachment on Misa for measurement.

Table 2. Requirements for field test protocol

ID Kit - Au NP	6.07506.440
includes:	Gold nanoparticles (Au NP)
	Scoop
	Disposable pipettes
	2 mL glass vials
Reagents	
DI water	
NaCl solution	3 g NaCl in 100 mL water
Test settings	Use ID Kit OP on MISA

CONCLUSION

The rapid and sensitive detection of aspartame in beverages is demonstrated using Misa and Au NPs. This assay demonstrates a quick and easy,

cost-effective and portable solution for detection of food additives in low-resource testing environments.

CONTACT

メトロームジャパン株式会社
143-0006 東京都大田区平
和島6-1-1
null 東京流通センター アネ
ックス9階

metrohm.jp@metrohm.jp

CONFIGURATION



MISA Advanced

Metrohm Instant SERS Analyzer (MISA) は、微量レベルでの違法物質、食品添加物、および食品汚染物質の迅速な検出 / 同定のための高性能な携帯可能分析システムです。MISAは、Metrohm 独自の軌道ラスタースキャン技術 (Orbital Raster Scan Technologie, ORS) を備えた高効率の分光器を有しています。これは省スペースで、より長いバッテリー寿命を持ち、現場やラボでの移動式用途にも完璧に適しています。MISA ではフレキシブルなサンプル採取を可能にする、レーサークラス1の様々なアタッチメントをご利用いただけます。アナライザーはBluetoothまたはUSBコネクタを介して操作可能です。

MISA Advanced ハッチケースは、ユーザーに Metrohmのナノ粒子溶液とP-SERSストリップを用いたSERS分析を可能にするコンフリートハッチケースです。

MISA Advanced ハッチケースには、MISAハイアルアタッチメント、P-SERSアタッチメント、ASTM校正標準、USBミニケーブル、USB電源装置、ならびにMISA装置を操作するためのMISA Calソフトウェアが含まれます。装置と付属品を安全に保管するための頑丈な保護ケースも同梱されています。



ID - Au NP

IDキット - Au NPには、Mira/Misaユーザーか金コロイド溶液でSERS分析を行うのに必要なコンポーネントが含まれています。このキットには、使い捨てのへら、滴下ヒベット、サンプルボトル、および金コロイド入りのボトルが含まれています