

# OMNIS Sample Robot S Pick&Place

2.1010.1010

OMNIS Sample Robot S with a "Peristaltic" (2-channel) pump module and a Pick&Place module in addition to extensive accessories for the direct transition to fully automatic titration. The system provides space in two sample racks for 32 sample beakers of 120 mL each. This modular system is supplied completely installed and can thus be put into operation in a very short time.

The system can also be extended upon request to include two additional peristaltic pumps and another Pick&Place module, thus doubling the throughput. If additional workstations are required, then this Sample Robot is already able to be expanded to become an L-sized OMNIS Sample Robot, thus enabling samples from seven racks to be processed in parallel on up to four Pick&Place modules and quadrupling the sample throughput.

Below, the accessories are grouped into Scope of delivery and Optional accessories.

Please keep this printout at hand for ordering replacement material.

These lists may be subject to change.

## Scope of delivery 2.1010.1010

Qt.	Order no.	Description
-----	-----------	-------------

1 PCS

1.1006.0010

Rod Stirrer "Sample Robot"

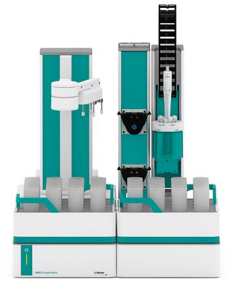
Rod stirrer with permanently mounted cable (2.5 m) for direct connection to the OMNIS Sample Robot.



1 PCS

1.1010.1030

OMNIS Sample Robot S Pick&Place



2 PCS

6.01400.200

Sample beakers, plastic (PP), 120 mL, 20 pieces

Sample beakers, plastic (polypropylene, PP), 120 mL, suitable for 602041030 OMNIS sample rack, 20 pieces.



1 PCS

6.01403.030

Titration head 3xNS14 / 4x6.4 mm (P&P)

Titration head with 3 NS14 and 4x 6.4 mm openings for using 120 mL beakers in Pick&Place modules of the OMNIS Sample Robot Pick&Place with two retracted dosing tips. Prepared for being equipped with rinsing and aspiration tubing.



2 PCS

6.01404.030

Beaker adapter for OMNIS 120 mL sample beaker

Beaker adapter for centering the 120 mL sample beaker in the slide of the Pick&Place modules



1 PCS

6.01543.100

Aspiration tip automation

Aspiration tip for automated OMNIS titrations.



2 PCS

6.01803.000

Silicone tubing 8/12 2.5 m

Silicone tubing for connecting to the drainage of the Pick&Place module or pump module in order to channel any solution overflows that may occur safely into the waste canister.



1 PCS

6.01804.410

Drain channel for OMNIS Sample Robot S

The drain channel is mounted behind the workstations of the OMNIS Sample Robot S and, in case of an error, collects any overflowing solution in order to channel it safely and contact-free through tubing into a waste canister.

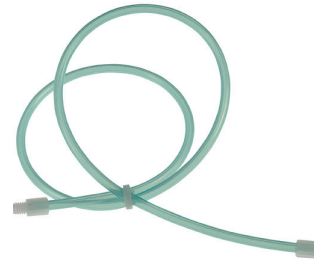


3 PCS

6.01805.000

FEP tubing connection / M6 / 66.5 cm

With light protection and protection against kinks.



---

1 PCS

6.01805.010

PTFE tubing connection / M8 / 66.5 cm

With light protection and protection against kinks.



---

1 PCS

6.01900.030

Stirring propeller 20 mm ETFE

Stirring propeller, 20 mm, with adjustable height for use with Rod Stirrer "Titrator" or Rod Stirrer "Sample Robot"



---

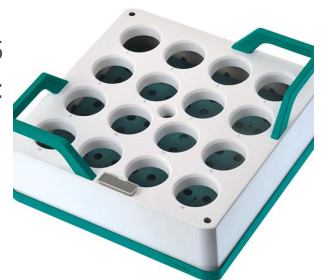
2 PCS

6.02041.030

OMNIS sample rack, 16 x 120 mL, (PP)

OMNIS sample rack for OMNIS Sample Robot Pick&Place, suitable for 16 sample beakers. The following sample beakers can be used: 6.01400.200, 6.01400.300, 6.01400.303.

Plastic: Polypropylene (PP)



1 PCS

6.02600.000

Dummy panel for module plate

Dummy panel for covering open spaces on the module plate of the OMNIS Sample Robot



1 PCS

6.02601.010

Gripper fingers 43 - 65 mm

Gripper fingers for OMNIS Sample Robot Pick&Place for gripping sample beakers with an outer diameter of 43 to 65 mm.



1 PCS

6.02706.000

Cable cover for Sample Robot

The cable cover protects the MDL and Ethernet cables connectors on the OMNIS Sample Robot.



1 PCS

6.05001.010

"Peristaltic" (2-channel) pump module accessory set

The accessory set contains all of the components required for the tube connections between a rinsing pump and an aspiration pump at the "Peristaltic" pump module. In addition to preassembled tubing with Luer connectors, each of these also includes two press clamps and pump tubing.



2 PCS

6.1621.000

Container 10 L

As rinsing or waste container in automated systems.



---

2 PCS

6.1621.100

Cap for 10-L container

Cap for 10-L container. For easy and safe transportation of filled containers.



---

1 PCS

6.2709.070

Guiding sleeve

For fixation of buret and dosing tips in titration heads and electrode holders



---

3 PCS


6.2740.020

Spray nozzle

For the fine-spraying of the rinsing solution.



## Optional accessories

Order no.	Description	
6.01400.300	Sample beakers, clear glass, 120 mL, 20 pieces  Sample beakers, clear glass, 120 mL, suitable for 602041030 OMNIS sample rack, 20 pieces.	
6.01400.303	Sample beakers, amber glass, 120 mL, 20 pieces  Sample beakers, amber glass, 120 mL, suitable for 602041030 OMNIS sample rack, 20 pieces	
6.02700.000	Safety shield for Pick&Place module  Safety shield for Pick&Place modules	
6.05700.000	Consumable Kit OMNIS Gripper  Four slide sleeves and rubber gripper fingers each for replacement on the gripper finger of the OMNIS Sample Robot.	

6.05700.010 Consumable Kit OMNIS Pump Module (2-channel)

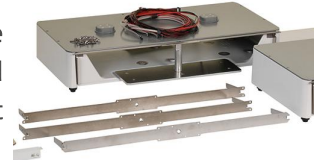
Two pump tubings each and associated press clamps for replacement in the OMNIS pump module. One Consumable Kit can be used for re-equipping two peristaltic pumps of the pump module.



---

6.05800.000 Upgrade Sample Robot S to M

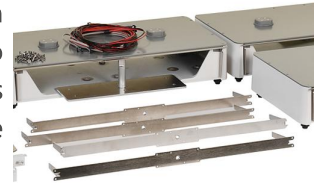
The set contains all of the components required for upgrading an already existing OMNIS Sample Robot from size S to size M. In addition to the required rack and module bases, all of the required cables, screws and arm extensions are included, as is the function license. As before, the set also contains a drain channel for OMNIS Sample Robot M/L.



---

6.05800.010 Upgrade Sample Robot S to L

The set contains all of the components required for the upgrade of an already existing OMNIS Sample Robot from size S to size L. In addition to the required rack and module bases, all of the required cables, screws and arm extensions are included, as is the function license. As before, the set also contains a drain channel for OMNIS Sample Robot M/L.



---

6.05800.080 Upgrade peristaltic pump module

This set contains all of the components that are required for the upgrade of a peristaltic (2-channel) pump module to a peristaltic (4-channel) pump module in the OMNIS Sample Robot Pick&Place. In addition to the pumps required, all the necessary tubing and canisters are included to equip one additional rinsing pump and one additional aspiration pump each. Compatible with OMNIS software version 2.13.2 and 2.17 or higher.





6.1828.000

PVDF connection nipple

For 6.1621.000 canister.

