



# 663 VA Stand for Metrohm Autolab potentiostats

2.663.0020

The 663 VA Stand is a voltammetric measuring stand for Metrohm Autolab potentiostats. The 663 VA Stand can be used to perform polarographic and voltammetric measurements on the following electrodes: Multi-Mode electrode pro (MME), rotating disk electrodes or scTRACE Gold.

Delivery with complete accessories and all electrodes for a complete measurement system: Multi-Mode electrode pro (MME), Ag/AgCl reference electrode and glassy carbon auxiliary electrode. Without cable and power supply unit. An IME663 interface is required as connector to the Metrohm Autolab potentiostats.

Below, the accessories are grouped into Scope of delivery and Optional accessories. Please keep this printout at hand for ordering replacement material. These lists may be subject to change.

## Scope of delivery 2.663.0020

Qt.	Order no.	Description
-----	-----------	-------------

1 PCS

1.663.0020

663 VA Stand for Metrohm Autolab potentiostats

The 663 VA Stand is a voltammetric measuring stand for potentiostats from Metrohm Autolab. The 663 VA Stand can be used to perform polarographic and voltammetric measurements on the following electrodes: Multi-Mode electrode pro (MME), rotating disk electrodes or scTRACE Gold.

Delivery with complete accessories and all electrodes for a complete measurement system: Multi-Mode electrode pro (MME), Ag/AgCl reference electrode and Pt auxiliary electrode. Without cable and power supply unit. An IME663 interface is required as connector to the potentiostats from Metrohm Autolab.



---

1 PCS

6.0728.120

Ag/AgCl reference electrode

Inner reference system with electrolyte  $c(\text{KCl}) = 3 \text{ mol/L}$ . For use with electrolyte vessel made of plastic 6.1245.010.



---

1 PCS

6.1204.200

Stirrer for VA Stand

Stirrer for VA Stand, complete, metal-free



---

1 PCS

6.1226.050

Mercury drop capillary (silanized) for MME

Silanized mercury drop capillary (10 pieces)



1 PCS

6.1241.120

Electrode holder

Electrode holder for VA auxiliary electrodes with plug contact 5.5. mm.  
For use with glassy carbon rod (6.1247.000) or platinum pin (6.1247.010).

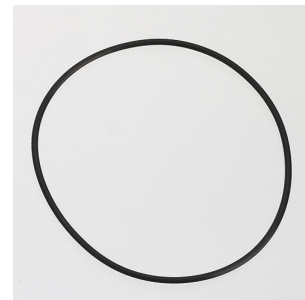


1 PCS

6.1244.020

Driving belt

For Rotating Disk Electrodes and stirrer in VA Stands (3 pieces).



1 PCS

6.1245.010

Electrolyte vessel made of plastic

Electrolyte vessel made of plastic with ceramic diaphragm for double  
junction reference electrode.

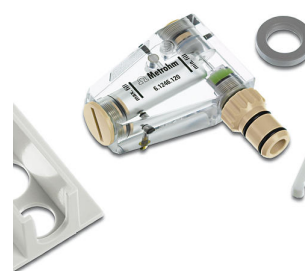


1 PCS

6.1246.120

Multi-Mode Electrode pro

Mercury electrode for voltammetry. Can be operated as DME, SMDE or  
HMDE.



1 PCS

6.1247.000

Glassy carbon rod (GC)

For electrode holder 6.1241.020 or 6.1241.120 for VA auxiliary electrode.



---

1 PCS

6.1247.020

Needles for MME

Needles for Multi Mode Electrode (3 pieces).



---

1 PCS

6.1415.210

Titration vessel / 10-90 mL



---

1 PCS

6.1801.080

Tubing for nitrogen connection

For supplying gas to voltammetry instruments



3 PCS

6.2112.130

Adapter plug contact 5.5 mm / screw contact, gold-plated

For VA electrodes



---

1 PCS

6.2308.020

Electrolyte 3 mol/L KCl (250 mL)

Electrolyte solution  $c(\text{KCl}) = 3 \text{ mol/L}$ , (for Ag/AgCl reference systems)



---

1 PCS

6.2406.000

Mercury drop catcher

Silver wire (to capture mercury drops by amalgamation)



---

1 PCS

6.2703.000

Stand ring for titration vessels



1 PCS            6.2709.030            Stopper for pipetting opening  
For 663 VA Stand



---

1 PCS            6.2709.050            Stopper for stirrer opening on VA Stand  
E.301.0004 O-rings included. Used for the stirrer opening of VA Stands.



---

1 PCS            6.2711.030            Tray for filling the MME  
  
For 884 Professional VA, 797 VA Computrace, 757 VA Computrace and  
647, 663, 694, 747 VA Stands



---

1 PCS            6.2816.020            Syringe 10 mL with Luer connection  
For various applications in IC and VA



1 PCS





6.2816.030

Needle with Luer connector

Needle for filling in mercury into the Multi-Mode Electrode and for sample addition in Karl Fischer titration.



## Optional accessories

Order no.	Description	
6.1204.130	Silver Electrode Tip  Metal electrode tip, silver (Ag). Electrode disk diameter 2 mm. M3 thread. Temperature range: 0 ... 40 °C.	
6.1204.140	Gold Electrode Tip  Metal electrode tip, gold (Au). Electrode disk diameter 2 mm. M3 thread. Temperature range: 0 ... 40 °C.	
6.1204.170	3 mm platinum electrode tip for CVS  Metal electrode tip made of platinum (Pt), diameter of electrode disk 3 mm, polished surface, M3 thread connection. Temperature range: 0 - 40 °C.	
6.1204.180	Ultra Trace electrode tip  Carbon electrode tip from Ultra Trace graphite. Electrode disk diameter 2 mm. M3 thread connection. Temperature range: 0 - 40 °C.	



6.1204.190 1 mm platinum electrode tip for CVS

Metal electrode tip made of platinum (Pt), diameter of electrode disk 1 mm  $\pm$ 0.02 mm, polished surface, shaft made of glass, M3 thread connection. Concentricity error: < 0.2 mm. Temperature range: 0 - 50 °C.



6.1204.210 Driving axle for rotating disk electrode (RDE)

Driving axle for rotating disk electrode (RDE) with titanium axle for VA measuring stands, M3 thread.



6.1204.220 Driving axle for rotating disk electrode (RDE) with mercury contact

Driving axle for rotating disk electrode (RDE) with titanium axle and mercury contact for VA measuring stands, M3 thread.



6.1204.600 Glassy carbon electrode tip, shaft made of glass.

Carbon electrode tip made of Glassy-Carbon (GC). Diameter of electrode disk 2 mm  $\pm$ 0.1 mm, polished surface, shaft made of glass, M3 thread connection, concentricity deviation: <0.25 mm. Temperature range: 0 - 50°C.



6.1204.610 2 mm platinum electrode tip for CVS

Metal electrode tip made of platinum (Pt), diameter of electrode disk 2 mm  $\pm$ 0.05 mm, polished surface, shaft made of glass, M3 thread connection. Concentricity error: < 0.3 mm. Temperature range: 0 - 50 °C.



6.1412.020 SPE measuring head insert for VA Computrace and 663 VA Stand

Measuring head insert for operation with *screen-printed electrodes* (SPE) or the scTRACE Gold. With installation material.



6.1415.150 Titration vessel / 5-70 mL



6.1415.220 Titration vessel / 20-90 mL



6.1415.250 Titration vessel / 50-150 mL



---

6.1418.150 Titration vessel with thermostat jacket / 5-70 mL



---

6.1418.220 Titration vessel with thermostat jacket / 20-90 mL



---

6.1418.250 Titration vessel with thermostat jacket / 50-150 mL



6.1450.210 PFA titration vessel / 10 to 90 mL  
For ultratrace analysis and for solutions containing fluoride.



---

6.1456.210 Measuring vessel / 10-90 mL  
Measuring vessel for automated VA systems. Dilution vessel for Advanced IC Sample Processor



---

6.2709.040 Stopper for MME opening on VA Stand  
For closing gas tubing of the Multi-Mode Electrode in VA Stands if not in use. E.301.0004 O-rings included.



---

6.2802.000 Polishing set for solid-state electrodes  
Polishing set with 1 polishing cloth and about 2 g aluminum oxide powder (grain size 0.3  $\mu\text{m}$ )



6.5340.000

VA electrode kit with scTRACE Gold for VA Computrace

Complete accessories kit for the determination of arsenic or mercury with the scTRACE Gold. Contains electrode holder, scTRACE Gold (4 pieces), measuring vessel, stirrer and additional accessories.



---

6.5340.030

VA electrode shaft accessories with SPE electrode shaft for VA Computrace

Accessory equipment for use with *screen-printed electrodes* (SPE). Contains electrode shaft for screen-printed electrodes, measuring vessel, stirrer, and additional accessories. Without electrodes.

