



# 810 Sample Processor

2.810.0010

Sample Processor for the automated analysis of routine samples using 916 Ti-Touch or 915 KF Ti-Touch.

Sample Processor with one workstation and one built-in membrane pump for the automatic processing of potentiometric as well as Karl Fischer titrations, in series with small to medium quantities. In addition to the built-in pump, an additional one (membrane or peristaltic) and up to three dosing devices for Liquid Handling tasks can be connected.

Because of the multitude of application variants, rack, stirrer, titration head, Swing Head and sample vessels must be tailored to the application and ordered separately.

Below, the accessories are grouped into Scope of delivery and Optional accessories.

Please keep this printout at hand for ordering replacement material.

These lists may be subject to change.

## Scope of delivery 2.810.0010

Qt.	Order no.	Description
-----	-----------	-------------

1 PCS

1.810.0010

810 Sample Processor

Sample Processor for the automated analysis of routine samples using 916 Ti-Touch or 915 KF Ti-Touch.

Sample Processor with one workstation and one built-in membrane pump for the automatic processing of potentiometric as well as Karl Fischer titrations, in series with small to medium quantities. In addition to the built-in pump, an additional one (membrane or peristaltic) and up to three dosing devices for Liquid Handling tasks can be connected.

Because of the multitude of application variants, rack, stirrer, titration head, Swing Head and sample vessels must be tailored to the application and ordered separately



---

2 PCS

6.1236.020

Sleeve with SGJ 14/12 mm

Sleeve with SGJ 14/12 mm and O-ring.



---

5 PCS

6.1446.000

SGJ stopper / B-14/(15)



---

3 PCS

6.1446.010

Stopper

Used with Sample Changers



1 PCS

6.1621.000

Container 10 L

As rinsing or waste container in automated systems.



---

1 PCS

6.1805.110

FEP tubing / M6 / 80 cm

With light and kink protection



---

3 PCS

6.1805.420

FEP tubing / M6 / 48 cm

With light and kink protection



---

1 PCS

6.1812.000

PTFE tubing 4 mm / 6 mm / 4 m



1 PCS      6.1828.000      PVDF connection nipple

For 6.1621.000 canister.



1 PCS      6.2053.000      Cable clip

Cable clip for fastening cables and tubes



1 PCS      6.2151.000      Cable USB A – mini-DIN 8-pin

Controller cable



1 PCS      6.2621.030      Hexagon key 4 mm



1 PCS

6.2621.070

5 mm hex key for IC Sample Processors



---

1 PCS

6.2621.140

Hexagon key 2.5 mm



---

3 PCS

6.2709.070

Guiding sleeve

For fixation of buret and dosing tips in titration heads and electrode holders



---

3 PCS

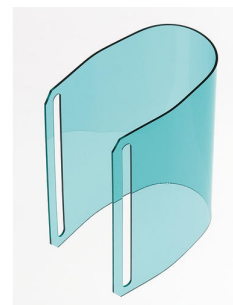
6.2740.020

Spray nozzle

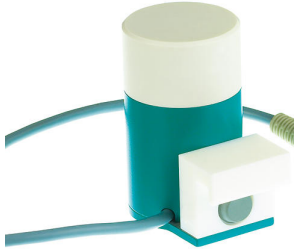



For the fine-spraying of the rinsing solution.



Safety shield for single-tower Sample Processors without 786 Swing Head.



## Optional accessories

Order no.	Description	
2.741.0010	741 Magnetic Stirrer	
	Magnetic stirrer for sample changers.	
	The magnetic stirrer is located beneath the sample rack.	
2.772.0120	772 Pump Unit – aspirate	
	Peristaltic pump for direct connection to Sample Processors. The "Aspiration" version contains extensive accessories for the aspiration of titered-out solutions.	
2.802.0020	802 Stirrer for sample changer	
	Rod stirrer for sample changer and Sample Processor.	
	With 104 mm 6.1909.020 stirring propeller and permanently installed cable.	
2.823.0020	823 Membrane Pump Unit «aspirate»	
	Membrane pump for direct connection to Sample Processors. The «Aspiration» version contains numerous accessories for aspirating off solutions.	

2.849.0010

### 849 Level Control

Additional equipment for Sample Processors for monitoring the filling level of rinsing or waste canisters via Remote. Prevents pumps from running dry and/or canisters from overflowing and is suitable for use with aqueous solutions, solvents and suspensions.



6.1458.010

Titration head, 6 x SGJ 14 and 3 x SGJ 9 openings.

With 6xSGJ 14 and 3x SGJ 9 openings.



6.1458.020

Titration head /4 x M10 connectors

With 4 M10 screw nipples, including stoppers.



6.1458.030

KF titration head /4 x M10 connectors

With 4 M10 screw nipples, including stoppers.





6.1458.040 Titration Head, 3 x SGJ 14

Titration head for 120 mL beakers. With 3 openings SGJ 14 and 4 openings 6.4 mm, 2 dosing tips included. Suitable for rinsing and aspiration equipment.



6.1458.070 Titration head / 2 x SGJ 14

Titration head for 75 mL beakers. With 2 openings SGJ 14, 2 openings 6.4 mm, and 3 pre-mounted dosing tips. Suitable for rinsing and aspiration equipment.



6.2041.310 Sample rack, 12 x 250 mL, (PVC)

Sample rack for 810 Sample Processor, 814 USB Sample Processor, 855 Robotic Titrosampler "Light", suitable for 12 sample beakers. The following sample beakers can be used: 6.1432.320, 6.1432.323, 6.1453.220, 6.1453.250.

Plastic: Polyvinyl chloride (PVC)



6.2041.320 Sample rack, 16 x 150 mL, (PVC)

Sample rack for 810 Sample Processor, 814 USB Sample Processor, 855 Robotic Titrosampler "Light", suitable for 16 sample beakers. The following sample beakers can be used: 150 mL beaker (tall).

Plastic: Polyvinyl chloride (PVC)



6.2041.340 Sample rack, 24 x 75 mL, (PVC)

Sample rack for 810 Sample Processor, 814 USB Sample Processor, 855 Robotic Titrosampler "Light", suitable for 24 sample beakers. The following sample beakers can be used: 6.1432.210, 6.1459.400.

Plastic: Polyvinyl chloride (PVC)

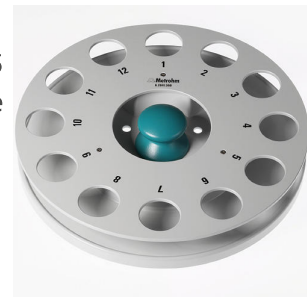


---

6.2041.360 Sample rack, 12 x 150 mL (PVC)

Sample rack for 810 Sample Processor, 814 USB Sample Processor, 855 Robotic Titrosampler "Light", suitable for 12 sample beakers. The following sample beakers can be used: 150 mL beaker (tall), 6.1459.310.

Plastic: Polyvinyl chloride (PVC)

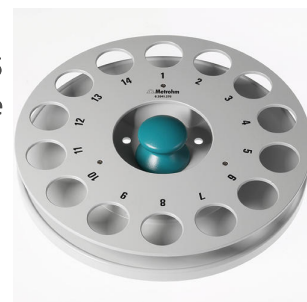


---

6.2041.370 Sample rack, 14 x 200 mL, (PVC)

Sample rack for 810 Sample Processor, 814 USB Sample Processor, 855 Robotic Titrosampler "Light", suitable for 14 sample beakers. The following sample beakers can be used: 6.1459.310.

Plastic: Polyvinyl chloride (PVC)

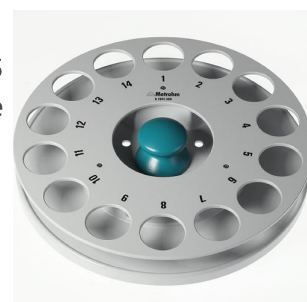


---

6.2041.380 Sample rack, 14 x 235 mL (PVC)

Sample rack for 810 Sample Changer, 814 USB Sample Processor, 855 Robotic Titrosampler "Light", suitable for 14 sample beakers. The following sample beakers can be used: 235 mL (8 oz).

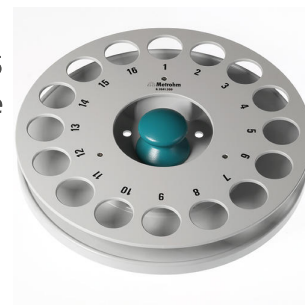
Plastic: Polyvinyl chloride (PVC)



6.2041.390 Sample rack, 16 x 100 mL, (PVC)

Sample rack for 810 Sample Changer, 814 USB Sample Processor, 855 Robotic Titrosampler "Light", suitable for 16 sample beakers. The following sample beakers can be used: 100 mL beakers, short.

Plastic: Polyvinyl chloride (PVC)



6.2041.460 Sample rack, 21 x 100 mL, (PVC)

Sample rack for 810 Sample Processor, 814 USB Sample Processor, 855 Robotic Titrosampler "Light" suitable for 21 sample vessels. The following sample vessels can be used: 100 mL digestion tubes (CSB).

Plastic: Polyvinyl chloride (PVC)



6.2041.470 Sample rack, 22 x 120 mL, (PP)

Sample rack for 810 Sample Changer, 814 USB Sample Processor, 855 Robotic Titrosampler "Light", suitable for 22 sample beakers. The following sample beakers can be used: 6.1459.300, 6.1459.307.

Plastic: Polypropylene (PP)



6.2058.110 Tower extension for Sample Processors

Height extension 130 mm for Sample Processors. Tower extension for COD applications.



6.2141.300

Remote cable 843 Pump Station to Sample Processor

Remote cable for the direct connection of the 843 Pump Station to the pump connectors of the Sample Processors



---

6.2148.010

Remote Box MSB

Additional remote interface for the connection of devices that can be controlled via remote lines. With permanently attached cable.



---

6.2711.060

Drip pan for 778/810/814/838/858 Sample Processors

Drip pan for 778, 810, 814, 838, 858 Sample Processors

