

855 Robotic Titrosampler "Basic" (1T/2P)

2.855.0020

Basic model for setting up customer-specific automation in the titration. Space-saving Robotic Sample Processor XL with integrated Titrando, one workstation including Swing Head and two built-in membrane pumps. The programming of the methods is accomplished by means of the handy Touch Control or with the tiamo™ titration software or OMNIS Software.

Below, the accessories are grouped into Scope of delivery and Optional accessories.
Please keep this printout at hand for ordering replacement material.
These lists may be subject to change.

Scope of delivery 2.855.0020

Qt.	Order no.	Description
-----	-----------	-------------

1 PCS

1.855.0020

855 Robotic Titrosampler "Basic" (1T/2P)

Basic model for setting up customer-specific automation in the titration. Space-saving Robotic Sample Processor XL with integrated Titrando, one workstation including Swing Head and two built-in membrane pumps. The programming of the methods is accomplished by means of the handy Touch Control or with the tiamo™ titration software.



2 PCS

6.1236.020

Sleeve with SGJ 14/12 mm

Sleeve with SGJ 14/12 mm and O-ring.



1 PCS

6.1543.170

Aspiration tip / M8 thread

Aspiration tip for the Sample Processors.



2 PCS

6.1621.000

Container 10 L

As rinsing or waste container in automated systems.



3 PCS 6.1805.060 FEP tubing / M6 / 60 cm
With light and kink protection



1 PCS 6.1805.120 FEP tubing / M6 / 100 cm
With light and kink protection



1 PCS 6.1805.510 PTFE tubing / M8 / 60 cm
With protection against kinks.



2 PCS 6.1812.000 PTFE tubing 4 mm / 6 mm / 4 m



2 PCS 6.1828.000 PVDF connection nipple

For 6.1621.000 canister.



1 PCS 6.2053.000 Cable clip

Cable clip for fastening cables and tubes



1 PCS 6.2151.000 Cable USB A – mini-DIN 8-pin

Controller cable



1 PCS 6.2621.030 Hexagon key 4 mm



1 PCS

6.2621.070

5 mm hex key for IC Sample Processors



1 PCS

6.2621.130

Hexagon key 2 mm

2 mm.



1 PCS

6.2621.140

Hexagon key 2.5 mm



3 PCS

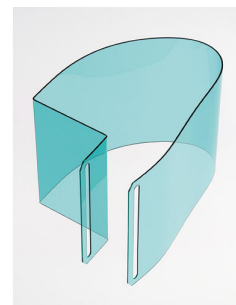
6.2740.020

Spray nozzle

For the fine-spraying of the rinsing solution.



Safety shield for Sample Processors with 786 Swing Head



Optional accessories

Order no.	Description	
2.802.0020	<p>802 Stirrer for sample changer</p> <p>Rod stirrer for sample changer and Sample Processor.</p> <p>With 104 mm 6.1909.020 stirring propeller and permanently installed cable.</p>	
2.849.0010	<p>849 Level Control</p> <p>Additional equipment for Sample Processors for monitoring the filling level of rinsing or waste canisters via Remote. Prevents pumps from running dry and/or canisters from overflowing and is suitable for use with aqueous solutions, solvents and suspensions.</p>	
6.06000.000	<p>OMNIS Software storage device</p> <p>License-based PC program for controlling complex OMNIS analysis systems.</p> <ul style="list-style-type: none"> • Sample-oriented operating procedures with numerous templates • Graphical method editor with numerous templates • Clearly organized and professional sample lists • Management of instruments, work systems, sensors, solutions • Dialog languages: German, English, Chinese 	

Enables stand-alone operation of the OMNIS software on a Windows™ computer.

Features:

- The license already includes one OMNIS instrument license.
- Must be activated via the Metrohm licensing portal.
- Not transferable to another computer.



6.1462.030

Robotic arm with transfer head for 786 Swing Head, left swinging

Transfer robotic arm for liquid handling purposes



6.1462.040

Robotic arm with transfer head for 786 Swing Head, right swinging

Transfer robotic arm for liquid handling purposes



6.1462.050

Robotic arm with titration head for 786 Swing Head, left or right swinging

Titration head for Swing Head



6.1462.060 Robotic arm with holder for titration head, left swinging
Titration head holder to 786 Swing Head



6.1462.070 Robotic arm with holder for titration head, right swinging
Titration head holder to 786 Swing Head



6.1462.090 Robotic arm with Luer-Lock adapter for 786 Swing Head, right swinging
Transfer robotic arm for liquid handling



6.1462.150 Robotic arm with titration head and beaker sensor for 786 Swing Head,
left or right-swinging
Titration head with beaker sensor for 786 Swing Head, 2 x M10, 1 x SGJ
14.5, 2 x buret tip



6.1462.160 Robotic arm with holder for titration head and sensor for 786 Swing Head, left swinging

Titration head holder with beaker sensor for 786 Swing Head



6.1462.170 Robotic arm with holder for titration head and sensor for 786 Swing Head, right swinging

Titration head holder with beaker sensor for 786 Swing Head



6.1909.010 Stirring propeller / 87 mm

Propeller stirrer, length from lower edge of SGJ: 96 mm. For use with beakers with 722, 802 Rod Stirrer



6.1909.020 Stirring propeller / 95 mm

Propeller stirrer, length from lower edge of SGJ: 104 mm. For use with beakers with 722, 802 Rod Stirrer



6.1909.030

Stirring propeller / 95 mm

Propeller stirrer with PP shaft, PVDF tip. Length from the SGJ: 104 mm. For KF applications with 722, 802 Rod Stirrer



6.1909.040

Stirring propeller / 93 mm

Propeller stirrer, length from lower edge of SGJ: 102 mm. For titration vessels with SGJ 14/15 and 722, 802 Rod Stirrer



6.1909.050

Stirring propeller / 102 mm

Propeller for 802 Stirrer when this is used with sample racks for 120 mL beakers (6.1459.300)

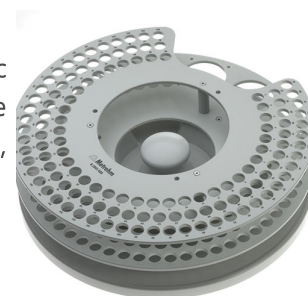


6.2041.400

Sample rack, 126 x 11 mL and 2 x 250 mL (PVC)

Sample rack for 815 Robotic USB Sample Processor XL, 855 Robotic Titrosampler "Basic" for 126 sample vessels and 2 sample beakers. The following sample vessels can be used: 6.02743.050, 6.2743.057, 6.1432.320, 6.1432.323, 6.1453.220, 6.1453.250.

Plastic: Polyvinyl chloride (PVC)



6.2041.410 Sample rack, 141 x 11 mL and 1 x 300 mL (PVC)

Sample rack for 815 Robotic USB Sample Processor XL, 855 Robotic Titrosampler "Basic" for 141 sample vessels and 1 rinsing bottle. The following sample vessels can be used: 6.2743.050, 6.2743.057, 6.1608.080.

Plastic: Polyvinyl chloride (PVC)



6.2041.430 Sample rack, 127 x 11 mL and 2 x 300 mL (PVC)

Sample rack for 815 Robotic USB Sample Processor XL, 855 Robotic Titrosampler "Basic" suitable for 127 sample vessels and 2 rinsing bottles. The following sample vessels can be used: 6.2743.050, 6.2743.057, 6.1608.080.

Plastic: Polyvinyl chloride (PVC)



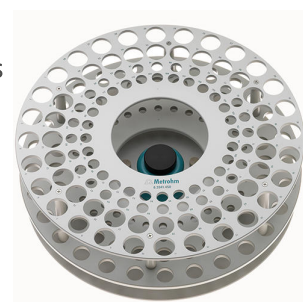
6.2041.440 Sample rack 148 x 11 mL + 3 x 300 mL

Sample rack for 148 x 11 mL samples with 3 rinsing beakers.



6.2041.450 Sample rack 56 x 11 mL + 56 x 50 mL

Multi-row sample rack for 56 samples in 11 mL sample vessels (6.2743.050) and 56 samples in sample vessels of 50 mL (6.2747.010).



6.2041.710 Sample rack, 160 x 6 mL, (PVC)

Sample rack for 815 Robotic Sample Processor, 855 Robotic Titrosampler "Basic" suitable for 160 sample vessels. The following sample vessels can be used: 6.2419.000.

Plastic: Polyvinyl chloride (PVC)



6.2041.800 Sample rack, 100 x 75 mL, (PVC)

Sample rack for 815 Robotic USB Sample Processor XL, 855 Robotic Titrosampler "Basic" suitable for 100 sample beakers. The following sample beakers can be used: 6.1432.210, 6.1459.400.

Plastic: Polyvinyl chloride (PVC)



6.2041.810 Sample rack, 34 x 150 mL, (PVC)

Sample rack for 815 Robotic USB Sample Processor XL, 855 Robotic Titrosampler "Basic" suitable for 34 sample beakers. The following sample beakers can be used: 150 mL beaker (tall).

Plastic: Polyvinyl chloride (PVC)



6.2041.820 Sample rack, 28 x 250 mL, (PVC)

Sample rack for 815 Robotic USB Sample Processor XL, 855 Robotic Titrosampler "Basic" suitable for 28 sample beakers. The following sample beakers can be used: 6.14332.320, 6.1432.323, 6.1453.220, 6.1453.250.

Plastic: Polyvinyl chloride (PVC)



6.2041.830 Sample rack, 28 x 200 mL, (PVC)

Sample rack for 815 Robotic USB Sample Processor XL, 855 Robotic Titrosampler "Basic", suitable for 28 sample beakers. The following sample beaker can be used: 6.1459.310.

Plastic: Polyvinyl chloride (PVC)



6.2041.840 Sample rack, 59 x 120 mL, (PVC)

Sample rack for 815 Robotic USB Sample Processor XL, 855 Robotic Titrosampler "Basic", suitable for 59 sample beakers. The following sample beakers can be used: 6.1459.300, 6.1459.307.

Plastic: Polyvinyl chloride (PVC)



6.2041.850 Sample rack, 59 x 120 mL, (PP)

Sample rack for 815 Robotic USB Sample Processor XL, 855 Robotic Titrosampler "Basic", suitable for 59 sample beakers. The following sample beakers can be used: 6.1459.300, 6.1459.307.

Plastic: Polyvinyl chloride (PVC)



6.2041.900 Sample rack insert, 54 x 75 mL, for water bath, (Al)

Sample rack insert for 815 Robotic USB Sample Processor XL, 855 Robotic Titrosampler "Basic", suitable for 54 sample beakers. The following sample beakers can be used: 6.1432.210, 6.1459.400.

Material: Aluminum (Al)



6.2058.110

Tower extension for Sample Processors

Height extension 130 mm for Sample Processors. Tower extension for COD applications.



6.2103.130

Adapter red 2 mm plug / 4 mm socket

For connecting plug B (4 mm) to 2 mm socket.



6.2103.140

Adapter black 2 mm plug / B socket 4 mm

For connecting plug B (4 mm) to 2 mm socket.



6.2148.010

Remote Box MSB

Additional remote interface for the connection of devices that can be controlled via remote lines. With permanently attached cable.



6.2840.000

Water bath for Robotic Sample Processors and Robotic Titrosampler

Water bath rack for Robotic Sample Processors and Titrosampler.



6.2841.010

External rinsing station for robotic arm with 6.1458.040 titration head

The external rinsing station can be fitted on the side next to the Robotic Sample Processor tower, making it possible for external cleaning of the titration equipment to be carried out during additional actions on the sample rack.

