



Robotic Analyzer Basic with OMNIS Software

2.855.3010

The Robotic Analyzer Basic package contains all the components for a fully automated titration or measurement in the smallest possible space in a minimum of time.

In addition to the Robotic Titrosampler Basic with a rack for 59 samples in 120 mL PP beakers, the package also includes a rod stirrer, a peristaltic pump and a Dosino with 20 mL dosing unit and the OMNIS control software.

Only electrode cables, sensors and additional dosing devices as needed must be added, so that it will be available for flexible use as Acid-Base, TAN/TBN, Chloride or Fluoride Analyzer.

Below, the accessories are grouped into Scope of delivery and Optional accessories.

Please keep this printout at hand for ordering replacement material.

These lists may be subject to change.

Scope of delivery 2.855.3010

Qt.	Order no.	Description
-----	-----------	-------------

1 PCS

1.772.0110

772 Pump Unit

Peristaltic pump for direct connection to Sample Processors.



1 PCS

1.800.0030

800 Dosino (cable length 1.5 m)

Drive with write/read hardware for intelligent dosing units. With permanently attached cable (length 1.5 m).



1 PCS

1.802.0010

802 Rod Stirrer for 727 Ti Stand

Rod stirrer with separate 6.2137.000 Speed controller and 6.1909.010 Propeller stirrer.



1 PCS

1.855.0010

855 Robotic Titrosampler "Basic" (1T/1P)

Basic model for setting up customer-specific automation in the titration. Space-saving Robotic Sample Processor XL with integrated Titrando, one workstation including Swing Head and one built-in membrane pump. Either an external peristaltic pump or membrane pump can be connected for aspiration of the titrated solution (optional). The programming of the methods is accomplished by means of the handy Touch Control or with the tiamo™ titration software.



1 PCS

6.06000.000

OMNIS Software storage device

License-based PC program for controlling complex OMNIS analysis systems.

- Sample-oriented operating procedures with numerous templates
- Graphical method editor with numerous templates
- Clearly organized and professional sample lists
- Management of instruments, work systems, sensors, solutions
- Dialog languages: German, English, Chinese



1 PCS

6.06003.010

OMNIS Stand-Alone license

Enables stand-alone operation of the OMNIS software on a Windows™ computer.

Features:

- The license already includes one OMNIS instrument license.
- Must be activated via the Metrohm licensing portal.
- Not transferable to another computer.



2 PCS

6.1236.020

Sleeve with SGJ 14/12 mm

Sleeve with SGJ 14/12 mm and O-ring.



1 PCS

6.1458.040 Titration Head, 3 x SGJ 14

Titration head for 120 mL beakers. With 3 openings SGJ 14 and 4 openings 6.4 mm, 2 dosing tips included. Suitable for rinsing and aspiration equipment.



1 PCS

6.1459.300 Sample beaker, plastic (PP), 120 mL, 250 pieces

Sample beaker, plastic (polypropylene, PP), 120 mL, suitable for sample racks: 6.2041.470, 6.2041.840, 6.2041.850, 6.2068.010, 6.2068.020, 6.2068.030, and 6.9920.141, 250 pieces



1 PCS

6.1462.170 Robotic arm with holder for titration head and sensor for 786 Swing Head, right swinging

Titration head holder with beaker sensor for 786 Swing Head



1 PCS

6.1543.170 Aspiration tip / M8 thread

Aspiration tip for the Sample Processors.



1 PCS 6.1546.030 Extractor rod
For PTFE piston of dosing unit



1 PCS 6.1608.023 Amber glass bottle / 1000 mL / GL 45
For Exchange Units. Bottle for auxiliary solutions.



2 PCS 6.1621.000 Container 10 L
As rinsing or waste container in automated systems.



2 PCS 6.1801.120 PVC tubing / 4 mm / 6 mm / 2 m



3 PCS 6.1805.060 FEP tubing / M6 / 60 cm
With light and kink protection



1 PCS 6.1805.120 FEP tubing / M6 / 100 cm
With light and kink protection



1 PCS 6.1805.510 PTFE tubing / M8 / 60 cm
With protection against kinks.



2 PCS 6.1812.000 PTFE tubing 4 mm / 6 mm / 4 m



2 PCS 6.1820.050 M6 / Olive adapter

For 6.1826.100 pump tubing, to peristaltic pumps.



1 PCS 6.1826.100 Pump tubing 6.4 mm / 1 m

Replaces the pump tubing used with the 772 Pump Unit and the 843 Pump Station (peristaltic).



1 PCS 6.1826.160 Viton pump tubing

For peristaltic pumps.



2 PCS 6.1828.000 PVDF connection nipple

For 6.1621.000 canister.



1 PCS

6.1909.050

Stirring propeller / 102 mm

Propeller for 802 Stirrer when this is used with sample racks for 120 mL beakers (6.1459.300)



1 PCS

6.2001.120

Bottle holder base, right, to 855

Bottle holder base for assembly on the right next to the tower of the 855 Robotic Titrosampler.



1 PCS

6.2041.850

Sample rack, 59 x 120 mL, (PP)

Sample rack for 815 Robotic USB Sample Processor XL, 855 Robotic Titrosampler "Basic", suitable for 59 sample beakers. The following sample beakers can be used: 6.1459.300, 6.1459.307.

Plastic: Polyvinyl chloride (PVC)



1 PCS

6.2053.000

Cable clip

Cable clip for fastening cables and tubes

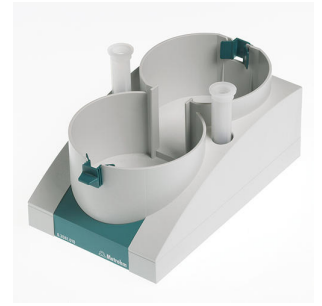


1 PCS

6.2061.010

Bottle holder for Dosinos

Bottle holder for up to two Dosinos, mounted on 1 L reagent bottles.



1 PCS

6.2151.000

Cable USB A – mini-DIN 8-pin

Controller cable



1 PCS

6.2621.030

Hexagon key 4 mm



1 PCS

6.2621.070

5 mm hex key for IC Sample Processors



1 PCS 6.2621.130 Hexagon key 2 mm
2 mm.



1 PCS 6.2621.140 Hexagon key 2.5 mm



1 PCS 6.2711.070 Drip pan for 789/815/855
Drip pan for 789, 815, 855 Robotic Sample Processors XL



3 PCS 6.2740.020 Spray nozzle
For the fine-spraying of the rinsing solution.



1 PCS

6.2751.100

Safety shield

Safety shield for Sample Processors with 786 Swing Head



1 PCS




6.3032.220

807 Dosing Unit 20 mL

807 Dosing Unit with integrated data chip with 20 mL glass cylinder and light protection, mountable to a reagent bottle with ISO/DIN GL 45 glass thread. FEP tubing connection, antidiffusion tip.



Optional accessories

Order no.	Description	
2.800.0010	800 Dosino	
	The 800 Dosino is a drive with write/read hardware for intelligent Dosing Units. With fixed cable (length 150 cm).	
2.849.0010	849 Level Control	
	Additional equipment for Sample Processors for monitoring the filling level of rinsing or waste canisters via Remote. Prevents pumps from running dry and/or canisters from overflowing and is suitable for use with aqueous solutions, solvents and suspensions.	
6.00430.100	Ag Titrode	
	Combined silver ring electrode with a pH glass membrane as reference electrode. This maintenance-free electrode is suitable for precipitation titrations when the pH value remains constant (titrant silver nitrate), for example of:	
	<ul style="list-style-type: none">• chloride, bromide, iodide• sulfides• hydrogen sulfide• mercaptans• cyanides	
	This electrode is stored in distilled water.	
	Depending on the application, we recommend using an Ag Titrode with a coating (AgBr, AgCl or Ag ₂ S coating), which can be ordered accordingly.	

6.0229.010 Solvotrode easyClean (fixed cable 1.2 m)

Combined pH electrode with flexible easyClean diaphragm and fixed cable (1.2 m) for all non-aqueous acid/base titrations.

The glass membrane is optimized for poorly conducting solutions, and thanks to the easy-to-clean easyClean diaphragm, the electrode is also well suited for heavily contaminated samples, such as used oil.

This electrode can be used with non-aqueous reference electrolytes (lithium chloride or tetraethylammonium bromide). Storage in the respective reference electrolyte.

The Solvotrode easyClean is also available under the article number 6.0229.020 with a fixed cable length of 2.0 m.



6.0253.100 Aquatrode Plus

Combined pH electrode for pH titrations in ion-deficient aqueous media (e.g., drinking water, process water). This electrode shows a very short response time in these samples. The fixed ground-joint diaphragm is insensitive to contamination.

When $c(\text{KCl}) = 3 \text{ mol/L}$ is used as bridge electrolyte, storage in storage solution is recommended.

The bridge electrolyte can be easily replaced with a chloride-free electrolyte (e.g., potassium nitrate $c(\text{KNO}_3) = 1 \text{ mol/L}$ (6.2310.010)).

Storage in the used bridge electrolyte.



6.0502.150 Ion-selective electrode, F

Fluoride-selective electrode with crystal membrane.

This ISE has to be used in combination with a reference electrode and is suitable for:

- ion measurements of F^- (10^{-6} mol/L to sat.)
- ion measurements in small sample volumes (minimum immersion depth 1 mm)
- titrations

Thanks to the robust/break-proof plastic shaft made of EP, this sensor is mechanically very resistant.



6.2840.000

Water bath for Robotic Sample Processors and Robotic Titrosampler

Water bath rack for Robotic Sample Processors and Titrosampler.



6.3032.250

807 Dosing Unit 50 mL

807 Dosing Unit with integrated data chip with 50 mL glass cylinder and light protection, mountable to a reagent bottle with ISO/DIN GL 45 glass thread. FEP tubing connection, antidiffusion tip.

