



881 Metrohm Combustion IC

2.881.3030

The 881 Metrohm Combustion IC enables the analysis of halogens and sulfur in flammable samples of all types using inline combustion digestion with subsequent ion chromatography determination (Combustion IC). It comprises all required components, e.g. the Combustion Module from Analytik Jena (2.136.0700), the 920 Absorber Module, the 881 Compact IC pro - Anion - MCS and the MagIC Net™ software. If necessary, the 881 Metrohm Combustion IC package can be supplemented with an Autosampler for solid or liquid samples (MMS 5000 Autosampler). The entire analysis, including sample input and sample digestion, is completely automated and is completely controlled by MagIC Net™.

Below, the accessories are grouped into Scope of delivery and Optional accessories. Please keep this printout at hand for ordering replacement material. These lists may be subject to change.

Scope of delivery 2.881.3030

Qt.	Order no.	Description
-----	-----------	-------------



Compact and intelligent high performance conductivity detector for intelligent IC instruments. Outstanding temperature stability, the complete signal processing within the protected detector block and the latest generation of DSP – Digital Signal Processing – guarantee the highest precision of the measurement. No change of measuring ranges (not even automatic ones) is required, due to the dynamic working range.



The 881 Compact IC pro – Anion – MCS is an intelligent ion chromatograph of compact design with column oven for the determination of anions or polar substances with sequential suppression. It can be operated with various types of detection.



The 920 Absorber Module combines the Combustion Module with the ion chromatograph. The 920 Absorber Module ensures that the gaseous compounds of the analytes are dissolved and channeled to the IC. It is responsible for the entire Liquid Handling. In addition to Combustion IC, it can also be used for gas analysis.



1 PCS

6.1014.000

Metrosep A Trap 1 - 100/4.0

High-capacity anion column, which is used to purify the eluent flow. Even chemicals of the highest quality level, e.g. "Ultrapur" or "puriss", can still contain minimal anion contaminations. These are reliably held back by the Metrosep A Trap 1 - 100/4.0.

This column is primarily used with gradient applications.



1 PCS

6.1014.200

Metrosep I Trap 1 - 100/4.0

The Metrosep I Trap 1 - 100/4.0 column is used to eliminate ionic, i.e. cationic and anionic, contaminants from aqueous solutions. Its use is especially recommended for the purification of the transfer water in combination with "MISP" or "Metrohm Inline Sample Preparation". Using the Metrosep I Trap 1 - 100/4.0 column can significantly reduce the influence of the transfer water on the system blank.



2 PCS

6.1546.030

Extractor rod

For PTFE piston of dosing unit



3 PCS

6.1602.150

Bottle attachment / GL 45 - 3 x UNF 10/32

For the connection of 1/16 in. capillaries. Used in conjunction with MSM auxiliary solutions and in Metrohm Inline Sample Preparation.



3 PCS

6.1602.160

Bottle attachment GL 45 for eluents and reagents

For eluent, reagent, and rinsing bottles, with connectors for the adsorber tube and the aspiration tubing.



1 PCS

6.1602.210

Attachment 5 x UNF 10/32 for «Waste Collector»

Attachment for holding up to 5 waste capillaries.



2 PCS

6.1608.020

Glass bottle / 1000 mL / GL 45

Bottle for auxiliary solutions.



1 PCS

6.1608.050

Drying bottle / 100 mL / GL 45



3 PCS

6.1608.070

Eluent bottle / 2 L / GL 45



3 PCS

6.1609.000

Adsorbing tube, large and bent

For filling with adsorber material.

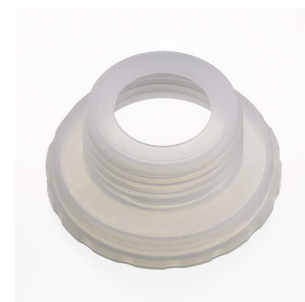


2 PCS

6.1618.020

Thread adapter S 40 to GL 45

Adapter for bottles with S40 thread (Merck...) to GL45.



1 PCS

6.1803.020

PTFE capillary 0.97 mm i.d. / 5 m

For all IC instruments



3 PCS

6.1803.030 PTFE capillary 0.5 mm i.d. / 3 m

Capillary for inline dialysis, for Dialysis Unit, IC Dialysis Sample Processor,
IC Liquid Handling Dialysis Unit



1 PCS

6.1803.040 PTFE capillary 0.5 mm i.d. / 1 m

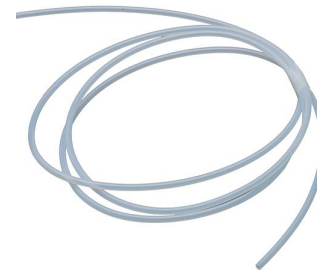
Capillary for sample handling in IC.



1 PCS

6.1803.130 Capillary 1/8 in. / 1/16 in. i.d. / 1.5 m

Connecting capillary from the eluent components to the Eluent
Synthesizer



4 PCS

6.1803.160 PTFE capillary, 0.75 mm ID / 3 m

PTFE capillary for use with the 920 Absorber Module.



2 PCS 6.1805.040 FEP tubing / M6 / 9 cm
With light and kink protection



1 PCS 6.1807.010 Y-connector for tubing 6-9 mm i.d.
Connector for waste tubing



1 PCS 6.1808.060 T connector / M6 inner

3 M6 inner threads.



1 PCS 6.1808.280 Adapter 807 Dosing Unit Port 4, M6 inner

Adapter for using Port 4 of the 807 dosing Unit for connection with an FEP tubing / M6.



1 PCS

6.1815.010

Spiral band 0.5 m

For holding together different cables or tubing.



2 PCS

6.1816.020

Silicone tubing 6 mm i.d., 1 m

For waste tubing.



1 PCS

6.1816.080

Silicone tubing 6 mm i.d. / 2 m

Drainage tubing to the "Waste Collector".



1 PCS

6.1825.290

PEEK sample loop 250 µL

Sample loop for «Metrohm intelligent Partial loop Technique» (MIPT) and for PILS (particle into liquid sampler). With 2 Peek pressure screws.



2 PCS

6.1826.420

PharMed® pump tubing (orange/yellow), 3-stopper

For MSM regeneration with peristaltic pump.



1 PCS

6.1831.040

PEEK capillary 0.5 mm i.d., 15 cm

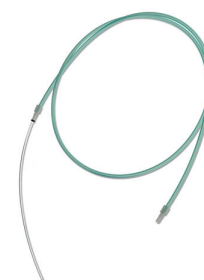
For inline dialysis. For IC Dialysis Unit, IC Dialysis Sample Processor, IC Liquid Handling Dialysis Unit



2 PCS

6.1838.020

FEP tubing connection to Absorber Module, M6, 150 cm



3 PCS

6.2023.020

Clip for SGJ 14/15

Clip for SGJ 14/16



1 PCS

6.2057.220

Holder to Waste Collector

Holder for fastening the Waste Collector to the IC instrument.



2 PCS

6.2057.230

Dosino holder for the Absorber Module

Holder for fastening Dosinos to the Absorber Module.



2 PCS

6.2151.020

Cable USB A - USB B 1.8 m

USB connecting cable



2 PCS

6.2251.000

Colored sleeves for capillaries

Colored pieces of heat shrink tubing for capillary coding. Three pieces each of five different colors.



1 PCS

6.2421.000

Absorber tube to the Absorber Module

Absorber tube for the absorption of the combustion gases from the Combustion Module.



1 PCS

6.2617.010

Tool for piston seal

For removing and assembling the piston seal for all standard pump heads



2 PCS

6.2621.000

Adjustable wrench

Max. opening: 20 mm. For IC instruments



1 PCS

6.2621.030

Hexagon key 4 mm



1 PCS

6.2621.050

1/4 in. wrench

For 1/4 in. screws. For IC instruments



1 PCS

6.2621.080

Capillary cutter

Cutting tool for simple cutting of plastic capillaries, 1/16" and 1/8", including 5 replacement blades.



1 PCS

6.2621.100

3 mm hex key for IC Sample Processors



2 PCS

6.2739.000

Wrench

For tightening connectors



1 PCS 6.2743.080 Stopper for overflow (ProfIC), 5 pieces
For Professional IC instruments



3 PCS 6.2744.010 Pressure screw 5x
With UNF 10/32 connection. For the connection of PEEK capillaries



3 PCS 6.2744.020 Luer/UNF coupling
For IC instruments



1 PCS 6.2744.034 Coupling olive/UNF 10/32, 2x

Connection between pressure screw and pump tubing. 2 pieces. For IC instruments with peristaltic pump.



1 PCS

6.2744.040

2 x UNF 10/32 coupling

For connecting 1/16 in. capillaries. For IC instruments



2 PCS

6.2744.070

Pressure screw short

Short version. With UNF 10/32 connection. 5 pieces. For the connection of PEEK capillaries



3 PCS

6.2744.080

M6 thread / UNF 10/32 adapter

With M6 outer thread. For IC instruments.



6 PCS

6.2744.090

Pressure screw long

Long version. With UNF 10/32 connection. 2 pieces. For the connection of PEEK capillaries (MCS and Sample degasser)



1 PCS

6.2744.170

Pressure screw PEEK UNF 1/4-28, 3 pieces

Fixing connecting capillaries of the eluent components at the Eluent Synthesizer



2 PCS

6.2744.180

Pump tubing connector with security lock and filter

For the connection of a pump tubing and a capillary with built-in filter



1 PCS

6.2744.200

Adapter UNF 10/32 outer / M6 inner

Connecting 1/16 in. PEEK capillaries and transfer tubing (M6)

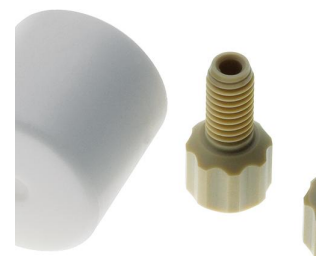


1 PCS

6.2744.210

Tubing adapter for aspiration filter (ProfIC)

For Professional IC instruments



8 PCS

6.2744.220

Screw stopper 10/32 long

For Professional IC Instruments. For sealing unused ports of degassers and MCS.



2 PCS

6.2744.350

PEEK pressure screw 14 mm, 3 pcs.

With UNF 10/32 connector. For the connection of PEEK capillaries in the Absorber Module.



1 PCS

6.2765.000

Container with GL 45 drainage to the "Waste Collector"

Container with drainage to the "Waste Collector".



1 PCS

6.2766.000

Holder for absorber tubing

Holder for fastening the absorber tubing in the Absorber Module.



1 PCS

6.2766.010

Holder for inlet valve

Holder for inlet valve to the Absorber Module.



1 PCS

6.2816.020

Syringe 10 mL with Luer connection

For various applications in IC and VA



1 PCS

6.2816.040

Purge tubing

With PTFE tubing and Luer connection. For syringes. For aspirating eluents.



1 PCS

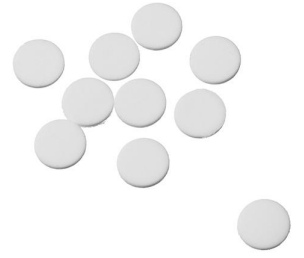
6.2821.090

Aspiration filter

Pore size: 27 µm. Set of 5 pieces. For aspiration tubing (6.1834.000) and filter tubes (6.1821.040) and (6.1821.050).



1 PCS 6.2821.130 Spare filter for inline filter
Spare filter for inline filter.



1 PCS 6.2824.170 Inlet valve PEEK
Metal-free check valve for the inlet side of the IC pump heads of the devices 940, 930, 925, 883, 882, 881, and 850.



1 PCS 6.3032.150 807 Dosing Unit 5 mL
807 Dosing Unit with integrated data chip with 5 mL glass cylinder and light protection, mountable to a reagent bottle with ISO/DIN GL 45 glass thread. FEP tubing connection, antidiffusion tip.



1 PCS 6.3032.210 807 Dosing Unit 10 mL
807 Dosing Unit with integrated data chip with 10 mL glass cylinder and light protection, mountable to a reagent bottle with ISO/DIN GL 45 glass thread. FEP tubing connection, antidiffusion tip.

