



940 Professional IC Vario ONE/SeS/PP

2.940.1500

The 940 Professional IC Vario ONE/SeS/PP is the intelligent IC instrument with sequential suppression and a peristaltic pump for suppressor regeneration. The instrument can be used with any separation and detection methods.

Typical areas of application:

- Anion or cation determinations with sequential suppression and conductivity detection
- Trace analysis for anions or cations
- Online monitoring for anions or cations

Below, the accessories are grouped into Scope of delivery and Optional accessories.

Please keep this printout at hand for ordering replacement material.

These lists may be subject to change.

Scope of delivery 2.940.1500

Qt.	Order no.	Description
-----	-----------	-------------

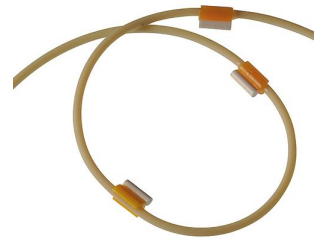
The 940 Professional IC Vario ONE/SeS/PP is the intelligent IC instrument with sequential suppression and a peristaltic pump for suppressor regeneration. The instrument can be used with any separation and detection methods.



Typical areas of application:

- Anion or cation determinations with sequential suppression and conductivity detection
- Trace analysis for anions or cations
- Online monitoring for anions or cations

For MSM regeneration with peristaltic pump.



Connection between pressure screw and pump tubing. 2 pieces. For IC instruments with peristaltic pump.



Short version. With UNF 10/32 connection. 5 pieces. For the connection of PEEK capillaries



1 PCS

6.2744.180

Pump tubing connector with security lock and filter

For the connection of a pump tubing and a capillary with built-in filter



1 PCS

6.5000.000

Accessory kit: Vario/Flex Basic

Basic set of accessories for a Professional IC Vario or Compact IC Flex.



1 PCS

6.5000.010

Accessory kit: Vario/Flex ONE

Set of accessories for the ONE Module (IC pump with injector) for Professional IC Vario and Compact IC Flex instruments.



1 PCS




6.5000.020

Accessory kit: Vario/Flex SeS

Set of accessories for sequential suppression (SeS) for Professional IC Vario and Compact IC Flex instruments. Without Suppressor Rotor.



Optional accessories

Order no.	Description	
2.800.0010	800 Dosino	
	The 800 Dosino is a drive with write/read hardware for intelligent Dosing Units. With fixed cable (length 150 cm).	
2.800.0020	800 Dosino	
	Drive with write/read hardware for intelligent dosing units. With permanently attached cable (length 0.65 m).	
2.815.4110	815 Robotic Soliprep for LC	
	The 815 Robotic Soliprep for LC is a complete system for the completely automatic preparation of samples which need to be dissolved, homogenized, diluted or filtered prior to their determination. The samples are conveyed directly into the injector of the chromatograph after preparation.	
	Comprised of:	
	1 x 815 Robotic USB Sample Processor XL	
	1 x 136 Polytron with power supply	
	1 x 772 Pump Unit	
	2 x 786 Swing Head	
	2 x 800 Dosino	

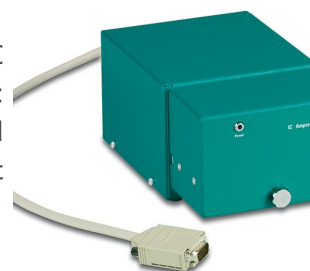
2.850.9010 IC Conductivity Detector

Compact and intelligent high performance conductivity detector for intelligent IC instruments. Outstanding temperature stability, the complete signal processing within the protected detector block and the latest generation of DSP – Digital Signal Processing – guarantee the highest precision of the measurement. No change of measuring ranges (not even automatic ones) is required, due to the dynamic working range.



2.850.9110 IC Amperometric Detector

Compact and intelligent amperometric detector for intelligent IC instruments. Outstanding selectivity due to the four measuring modes: DC, PAD, flexIPAD and CV, as well as the excellent signal/noise ratio and the very fast stabilization of the measuring signal guarantee the highest in measurement precision.



2.858.0010 858 Professional Sample Processor

The 858 Professional Sample Processor processes samples from 500 μ L to 500 mL. The sample transfer takes place either by means of a peristaltic pump on the 850 Professional IC system or with an 800 Dosino.



2.858.0020 858 Professional Sample Processor – Pump

The 858 Professional Sample Processor – Pump processes samples from 500 μ L to 500 mL. The sample transfer takes place either with the installed bidirectional two-channel peristaltic pump or with an 800 Dosino.



2.858.0030

858 Professional Sample Processor – Pump – Injector

The 858 Professional Sample Processor – Pump – Injector processes samples from 500 µL to 500 mL. The sample transfer takes place either with the installed bidirectional two-channel peristaltic pump or by means of an 800 Dosino. In addition, a six-way injection valve is available for the sample preparation.



2.863.0010

863 Compact IC Autosampler

The 863 Compact IC Autosampler is the ideal help for routine analysis. It enables automation of the full range of Metrohm IC instruments.



2.889.0010

889 IC Sample Center

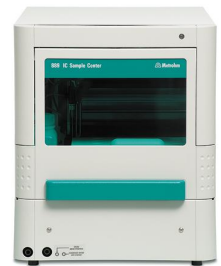
The 889 IC Sample Center is a robust Autosampler for high sample throughput, optimized for the challenges of the modern analytic laboratory. It works in accordance with the x-y-z principle and a syringe control with high resolution for precise sample injection. A double needle system enables the penetration of vessel caps and septa. A PEEK injection valve completes the automation system of the 889 IC Sample Center. It is the appropriate automation solution when you have only a very small amount of sample.



2.889.0020

889 IC Sample Center – cool

The 889 IC Sample Center – cool is the appropriate automation solution when you have only a very small amount of sample. In comparison with the 889 IC Sample Center, it possesses in addition a cooling function and is thus the ideal sample changer for biochemically relevant or thermally unstable samples.



2.889.0030

889 IC Sample Center Basic

The 889 IC Sample Center Basic – is a robust Autosampler for high sample throughput, optimized for the challenges of the modern analytic laboratory. It uses the x-y-z principle. A double needle system enables the penetration of vessel caps and septa.

The sample transfer takes place either with a peristaltic pump in the IC system or with an 800 Dosino, e.g. when applying the intelligent Partial Loop Injection Technique.

Supported with MagIC Net 4.1 and higher.



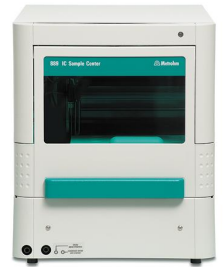
2.889.0040

889 IC Sample Center Basic - cool

The 889 IC Sample Center Basic – cool is the appropriate automation solution when you have only a very small amount of sample. In comparison with the 889 IC Sample Center Basic, it possesses in addition a cooling function and is thus the ideal sample changer for biochemically relevant or thermally unstable samples.

The sample transfer takes place either with a peristaltic pump in the IC system or with an 800 Dosino, e.g. when applying the intelligent Partial Loop Injection Technique.

Supported with MagIC Net 4.1 and higher.



2.919.0020

919 IC Autosampler plus

The 919 IC Autosampler plus fulfills the requirements of laboratories with medium sample numbers. It enables automation of the full range of Metrohm IC instruments.



2.941.0010

941 Eluent Production Module

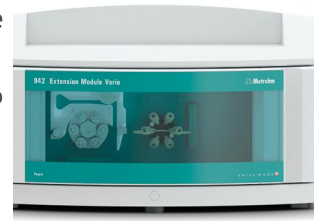
The 941 Eluent Production Module enables the automatic production of an eluent. It enables continuous working without manual intervention and guarantees stable retention times. It can be combined with all Metrohm IC instruments and is monitored by MagIC Net.



The 942 Extension Module Vario Prep 2 is an extension module for the Professional IC Vario line of instruments. It multiplies the possibilities of Inline Sample Preparation and Liquid Handling in Professional IC Vario systems.

Typical applications

- Inline Dialysis in two-channel Vario systems
- Inline Dialysis in systems without sample changers
- Column switching and cutting techniques



The 942 Extension Module Vario HPG is an extension module for the Professional IC Vario line of instruments. It permits the addition of a further eluent in a Professional IC Vario high-pressure gradient system.

Typical applications

- High-pressure gradient systems with up to four eluents



The 942 Extension Module Vario LQH is an extension module for the Professional IC Vario line of instruments. It expands the possibilities of Metrohm Inline Sample Preparation "MISP" and Liquid Handling and opens a Professional IC system for Online Monitoring.

Typical applications:

- Extended Inline Sample Preparation
- Online monitoring
- Dilution without sample changers
- Fully automatic sample derivation reactions



The 942 Extension Module Vario ChS/PP is an extension module for the Professional IC Vario line of instruments. It permits the integration of a complete chemical suppression with a peristaltic pump for suppressor regeneration or Inline Neutralization or Inline Cation Removal, respectively, in a Professional IC Vario system.



Typical applications:

- Chemical suppression for 2nd analysis channel
- Inline Neutralization/Cation Removal

The 942 Extension Module Vario SeS/PP is an extension module for the Professional IC Vario line of instruments. It permits the integration of a complete sequential suppression with a peristaltic pump for suppressor regeneration in a Professional IC Vario system.



Typical applications:

- Sequential suppression for an additional analysis channel

The 942 Extension Module Vario ONE/Deg is an extension module for the Professional IC Vario line of instruments. It permits the installation of an additional IC analysis channel in a Professional IC Vario system.



Typical applications:

- Parallel anion and cation analysis with low-pressure gradient
- Parallel anion and cation analysis with Inline Neutralization
- Additional analysis channel with UV/VIS or amperometric detector

2.943.0110

943 Professional Reactor Vario

The 943 Professional Reactor Vario is a heatable reactor, especially developed for pre- and post-column derivatization. It captivates by its robustness, the fast heating rate and the possibility of carrying out reactions at up to 150 °C.



2.943.0210

943 Professional Thermostat Vario

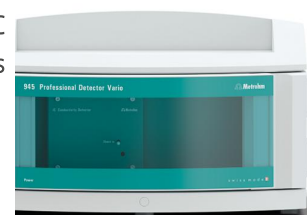
The 943 Professional Thermostat Vario is a stand-alone column oven for up to two columns with a maximum length of 150 mm. It captivates by its fast heating rate and the possibility of operating two separation columns together at up to 80°C.



2.945.0010

945 Professional Detector Vario – Conductivity

Intelligent stand-alone detector equipped with a high-performance IC Conductivity Detector. For use with intelligent IC instruments or as independent conductivity detector.



2.945.0020

945 Professional Detector Vario – Amperometry

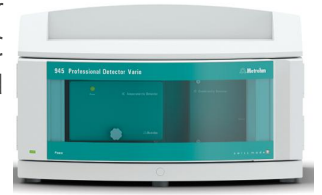
Intelligent stand-alone detector equipped with the IC Amperometric Detector. Outstanding selectivity due to the four measuring modes: DC, PAD, flexIPAD, CV. The excellent signal/noise ratio and the very fast start-up guarantee the highest in measurement precision. For use with intelligent IC instruments or as independent detector.



2.945.0030

945 Professional Detector Vario – Conductivity & Amperometry

Intelligent stand-alone detector equipped with the high performance IC Conductivity Detector and the IC Amperometric Detector, with the four measuring modes DC, PAD, flexIPAD and CV. For use with intelligent IC instruments or as independent detector for conductivity and amperometric detection.



2.947.0010

947 Professional UV/VIS Detector Vario SW

As an intelligent, single-wavelength detector, the 947 Professional UV/VIS Detector Vario SW permits a secure and reliable quantification of substances active in the ultraviolet or visible range. One wavelength can be selected.



2.947.0020

947 Professional UV/VIS Detector Vario MW

As an intelligent, multi-wavelength detector, the 947 Professional UV/VIS Detector Vario MW permits a secure and reliable quantification of substances active in the ultraviolet or visible range. Up to eight wavelengths can be freely selected. A diode array is used for detection.



2.948.0010

948 Continuous IC Module, CEP

Automated hydroxide eluent production takes place with the 948 Continuous IC Module. Isocratic eluents can be produced and gradients can be run.

The 948 Continuous IC Module, CEP is comprised of the following parts:

- 948 Continuous IC Module
- Eluent Producer Cartridge (EPC, 6.02850.200)
- Continuous Anion Trap (CT, 6.02850.100)
- High-pressure degasser (H-DEG, 6.02850.000)



6.2061.130 Safety bottle holder for Professional IC instruments

Additional bottle holder for Professional IC instruments.



6.2617.040 Tool for piston seal, macro

For removing and assembling the piston seal for all macro pump heads



6.2741.040 PE/PTFE piston seal, macro

For all macro pump heads



6.2755.000 Tubing cartridge

For the peristaltic pumps of IC instruments. Contact pressure adjustable.



6.2824.130

Macro pump head PEEK

Macro pump head for intelligent IC instruments, flow range 0.1...20 mL /min, maximum pressure 12.5 MPa.



6.2832.000

MSM Rotor A

Suppressor rotor for all IC instruments with MSM (Metrohm Suppressor Module)



6.2842.000

MSM-HC Rotor A

Suppressor rotor for all IC instruments with MSM-HC (Metrohm Suppressor Module with high capacity)



6.2842.020

Adapter sleeve, MSM

Not only the MSM Rotor A but also the MSM-LC Rotor A can be installed in the rotor housing with the aid of the adapter sleeve.



6.2842.100 MSM-HC Rotor A, Hydroxide

Suppressor rotor with high capacity for hydroxide eluents for all IC instruments with MSM-HC (Metrohm Suppressor Module with high capacity).



6.2842.200 MSM-HC Rotor C

Suppressor rotor for all IC instruments with MSM-HC drive (Metrohm Suppressor Module with high capacity) for cation suppression.



6.2844.000 MSM-LC Rotor A

Suppressor rotor for use with 2 mm columns.



Professional chromatography software from Metrohm for controlling all intelligent Professional IC systems, Compact IC systems and their peripherals, all detectors and the various Auto samplers, 800 Dosino, 771 Compact Interface, etc. The software permits checks, data acquisition, data evaluation and data monitoring as well as report generation of ion chromatographic analyses.



Graphical user interface for routine operations, extensive database programs, method development, configuration and manual control panel; very flexible user management, efficient database operations, extensive data export functions, individually configurable report generator, control and monitoring of all system components and the chromatography results.

MagIC Net Professional complies fully with FDA Regulation 21 CFR Part 11 as well as GLP.

MagIC Net is available in 15 dialog languages: German, English, Chinese, Traditional Chinese, French, Italian, Spanish, Portuguese, Bulgarian, Czech, Hungarian, Japanese, Korean, Russian, Slovakian

With this version, the graphic user interface has been modernized, which improves, among other things, the scaling and sharpness of the user interface on 4K monitors.

1 license

The installation and documents are supplied on a USB flash drive.

Client/server-compatible chromatography software from Metrohm for controlling all intelligent Professional IC systems, Compact IC systems and their peripherals, all detectors and the various Autosamplers, 800 Dosino, 771 Compact Interface, etc.

The software permits checks, data acquisition, data evaluation and data monitoring as well as report generation of ion chromatographic analyses. Data and method are centrally stored on a Server.



Graphical user interface for routine operations, extensive database programs, method development, configuration and manual control panel; very flexible user management, efficient database operations, extensive data export functions, individually configurable report generator, control and monitoring of all system components and the chromatography results.

MagIC Net Multi complies fully with FDA Regulation 21 CFR Part 11 as well as with GLP.

MagIC Net is available in 15 dialog languages: German, English, Chinese, Traditional Chinese, French, Italian, Spanish, Portuguese, Bulgarian, Czech, Hungarian, Japanese, Korean, Russian, Slovakian

With this version, the graphic user interface has been modernized, which improves, among other things, the scaling and sharpness of the user interface on 4K monitors.

Performance for client/server systems with servers outside the in-house company network has been improved.

Client/server version with 3 licenses
