



KFT equipment for Eco KF Titrator with Polytron

6.05610.060

Complete accessory set for volumetric Karl Fischer titration with Polytron

Below, the accessories are grouped into Scope of delivery and Optional accessories.

Please keep this printout at hand for ordering replacement material.

These lists may be subject to change.

Scope of delivery 6.05610.060

Qt.	Order no.	Description
1 PCS	6.00346.100	Double Pt ring electrode for volumetry

Indicator electrode for Karl Fischer titration which, thanks to its two fused platinum rings, is more robust and easier to clean than the conventional platinum pin electrode (6.0338.100).



1 PCS

6.01405.060

Eco titration vessel lid for 601406XXX titration vessels for Polytron

Titration vessel lid for volumetric Karl Fischer titration with an Eco KF titrator with Polytron

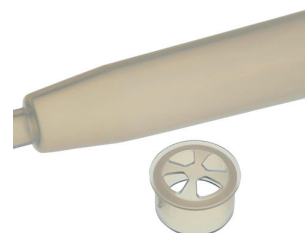


1 PCS

6.01406.010

Adsorber tube with lid

Adsorber tube with lid for OMNIS Karl Fischer titrator, volumetric



1 PCS

6.01406.250

50 – 150 mL titration vessel

50 – 150 mL titration vessel with screw top for use with 6014050X0 titration vessel lids.



1 PCS

6.01408.010

Set of seals for Karl Fischer titration cell

Complete set of seals, suitable for 6.05609.000 and 6.05609.010.



1 PCS

6.01543.120

Antidiffusion tip

Titration tip with antidiffusion valve, suitable for OMNIS Karl Fischer titrator.

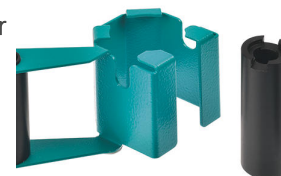


1 PCS

6.02008.030

Holder for homogenizer for Eco Titrations instruments

Holder for homogenizer for fastening the Polytron in place, suitable for 601405060 titration vessel lid



3 PCS

6.02709.010

Stopper

Plastic stoppers, suitable for 2.1001.4220 OMNIS Karl Fischer Titrator.



1 PCS

6.02709.020

Septum stopper

Plastic septum stopper, suitable for 6014050X0 titration vessel lids.



2 PCS

6.02709.030

Screw nipple

Plastic screw nipple, suitable for 6014050X0 titration vessel lids.



1 PCS

6.02709.050

Guide sleeve

For fixation of the Polytron in the 601405040 titration vessel upper part.



1 PCS

6.02801.000

Cotton for adsorber tube

Wad of cotton (4 pieces), suitable for OMNIS 601406010 adsorber tube.



2 PCS

6.1448.010

Septum 12 mm, 5 pieces

Set of 5 items.



1 PCS

6.2104.020

Electrode cable / 1 m / F

For connecting electrodes with Metrohm plug-in head G to Metrohm instruments (socket F).



1 PCS

6.2811.000

Molecular sieve

Molecular sieve. Bottle containing 250 g. Pore size: 0.3 nm. Without moisture indicator. For Rancimats and Karl Fischer instruments.



2 PCS

6.2816.020

Syringe 10 mL with Luer connection

For various applications in IC and VA



2 PCS

6.2816.030

Needle with Luer connector

Needle for filling in mercury into the Multi-Mode Electrode and for sample addition in Karl Fischer titration.



Optional accessories

Order no.	Description
2.136.0100	<p>Polytron PT 1300 D</p> <p>Polytron PT 1300 D - Metrohm version</p> <p>Homogenizer that can be controlled directly by OMNIS Software, tiamo™ or Touch Control.</p> <p>The Polytron PT 1300 D is comprised of a control unit and a drive. The coupling system on the drive permits simple and rapid replacement of the aggregates without additional tools.</p> <p>Solid samples can be pulverized without difficulty. However the instrument is also highly suitable for ensuring thorough mixing in viscous samples.</p>
6.02709.040	<p>Stopper</p> <p>Stopper for titration vessel lids 6014050X0.</p>
6.02711.000	<p>Spoon for paste</p> <p>Suitable for use in Karl Fischer water content determinations of pasty substances such as honey, cosmetics, greases or various dairy products.</p> <p>The spoon for paste facilitates the addition of viscous samples. It is handled like any other spatula and enables convenient, rapid and loss-free addition of pastes into the Karl Fischer titration vessel.</p> <p>To dissolve viscous samples quickly and completely, we also recommend the use of a homogenizer.</p>



6.9012.000

Dispersing aggregate for Polytron, 125 mm

Standard dispersing aggregate for Polytron 1300 D



6.9012.010

Dispersing aggregate for Polytron, 157 mm

Special dispersing aggregate (Metrohm version) with protruding knives

