



# IC equipment: MiPT

6.5330.180

Accessory set for assembling a Dosino for Partial-Loop-Injection.

Below, the accessories are grouped into Scope of delivery and Optional accessories.  
Please keep this printout at hand for ordering replacement material.  
These lists may be subject to change.

## Scope of delivery 6.5330.180

Qt.	Order no.	Description
1 PCS	6.1580.120	807 Dosing Unit 2 mL without accessories
<p>807 Dosing Unit with integrated data chip with 2 mL glass cylinder and light protection, mountable to a reagent bottle with ISO/DIN GL 45 glass thread.</p>		



1 PCS

6.1602.160

Bottle attachment GL 45 for eluents and reagents

For eluent, reagent, and rinsing bottles, with connectors for the adsorber tube and the aspiration tubing.



1 PCS

6.1608.070

Eluent bottle / 2 L / GL 45

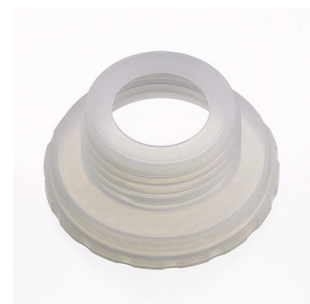


1 PCS

6.1618.020

Thread adapter S 40 to GL 45

Adapter for bottles with S40 thread (Merck...) to GL45.



1 PCS

6.1619.000

Adsorber tube for 807 Dosing Unit



1 PCS

6.1624.000

Adapter SGJ 14 for 6.1619.XXX Adsorber tube

Adapter SGJ 14. Part of 6.1619.010 for Dilution Sample Processor.



1 PCS

6.1805.120

FEP tubing / M6 / 100 cm

With light and kink protection



1 PCS

6.1819.110

FEP aspiration tubing to canister

Aspiration tubing to canister attachment with M6 connector. For the production of eluents.



1 PCS

6.1825.290

PEEK sample loop 250 µL

Sample loop for «Metrohm intelligent Partial loop Technique» (MIPT) and for PILS (particle into liquid sampler). With 2 Peek pressure screws.



1 PCS

6.1831.180

PEEK Capillary 0.5 mm i.d., 3 m



1 PCS

6.1841.000

PEEK transfer capillary 2 mL, 5 m

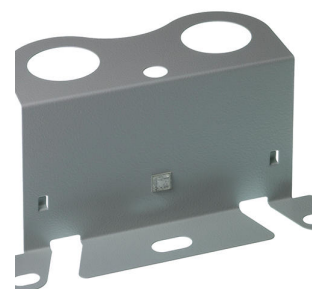


1 PCS

6.2057.210

Holder for Dosino to IC instruments

Mounting part for Dosinos at the IC instrument housing.



1 PCS

6.2744.014

Pressure screw 2x

With UNF 10/32 connection. For the connection of PEEK capillaries



1 PCS

6.2744.080

M6 thread / UNF 10/32 adapter

With M6 outer thread. For IC instruments.



---

1 PCS

6.2841.120

Liquid Handling Station, left

Combined rinsing and dilution station for sample changers with a Swing Head. To be assembled to the left of the tower.

