



# Automated volumetric KF titrations

## MATi 10

Fully automated system for volumetric Karl Fischer water content determination in up to 24 samples. The system is controlled with OMNIS software and consists of an 814 USB Sample Processor, a 901 Titrando and extensive accessories.

The samples are weighed out into the beakers, sealed to protect against humidity and placed on the rack. Before the actual titration, they are dissolved in a defined volume of KF working medium, after which the water content is titrated.

This method is particularly suitable for samples that dissolve readily in the KF working medium. In addition, solubility can be improved by using suitable solubility promoters.

Below, the accessories are grouped into Scope of delivery and Optional accessories.

Please keep this printout at hand for ordering replacement material.

These lists may be subject to change.

## Scope of delivery MATi 10

Qt.	Order no.	Description
-----	-----------	-------------

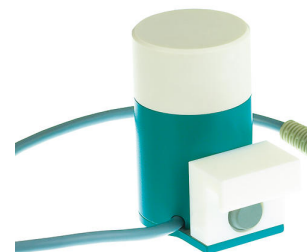
1 PCS

2.741.0010

741 Magnetic Stirrer

Magnetic stirrer for sample changers.

The magnetic stirrer is located beneath the sample rack.



---

2 PCS

2.800.0010

800 Dosino

The 800 Dosino is a drive with write/read hardware for intelligent Dosing Units. With fixed cable (length 150 cm).



---

1 PCS

2.814.0030

814 USB Sample Processor (1T/0P)

USB Sample Processor with one workstation for the automatic processing of routine samples in series with small to medium quantities. Up to two pumps (membrane or peristaltic) and three dosing devices for Liquid Handling tasks can be connected.

Because of the multitude of application variants, rack, stirrer, titration head, Swing Head and sample vessels must be tailored to the application and ordered separately.

The control is "stand alone" using Touch Control. The following software products can be selected for the PC control: tiamo™ titration software, MagIC Net chromatography software, viva voltammetry software, or OMNIS.



The Karl Fischer Titrando for the modern titration laboratory

In addition to the Karl Fischer mode (KFT), the high-end titrator is also equipped with the SET mode and can thus perform titrations to a predefined endpoint.

"iTrode ready": As a result of the high-resolution, galvanic measuring interface – now also for the first time with additional digital measuring input for the intelligent "iTrodes" electrodes – it is additionally possible to perform pH measurements with a maximum of precision.

Thanks to the four MSB connectors, up to four Dosinos can be connected to the 901 Titrando. These can be used not only for titration, but also for the automated addition of sample, standard and auxiliary solutions such as solubility promoters. Furthermore, you have all of the Liquid Handling commands at your disposal, which means that the aspiration of exhausted reagent and the addition of fresh solvent can also be automated.

For use with OMNIS Software, *tiamo* software, or Touch Control unit. Compliance with GMP/GLP and FDA regulations such as 21 CFR Part 11, if required



License-based PC program for controlling complex OMNIS analysis systems.

- Sample-oriented operating procedures with numerous templates
- Graphical method editor with numerous templates
- Clearly organized and professional sample lists
- Management of instruments, work systems, sensors, solutions
- Dialog languages: German, English, Chinese



1 PCS

6.06003.012

OMNIS stand-alone license with 2 instrument licenses

Enables stand-alone operation of the OMNIS Software on a Windows™ computer.

Features:

- The license already includes two OMNIS instrument licenses.
- Must be activated via the Metrohm licensing portal.
- Not transferable to another computer.



1 PCS

6.1608.023

Amber glass bottle / 1000 mL / GL 45

For Exchange Units. Bottle for auxiliary solutions.



1 PCS

6.1805.030

FEP tubing / M6 / 150 cm

With light and kink protection



1 PCS

6.2151.000

Cable USB A – mini-DIN 8-pin

Controller cable



1 PCS

6.3032.210

807 Dosing Unit 10 mL

807 Dosing Unit with integrated data chip with 10 mL glass cylinder and light protection, mountable to a reagent bottle with ISO/DIN GL 45 glass thread. FEP tubing connection, antidiffusion tip.



1 PCS

6.3032.250

807 Dosing Unit 50 mL

807 Dosing Unit with integrated data chip with 50 mL glass cylinder and light protection, mountable to a reagent bottle with ISO/DIN GL 45 glass thread. FEP tubing connection, antidiffusion tip.

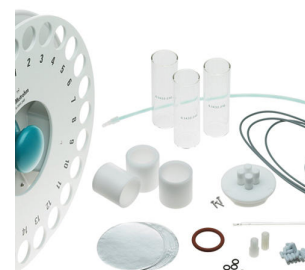


1 PCS


6.5610.010

KFT equipment for 810/814 Sample Processor

Karl Fischer equipment for 810 or 814 Sample Processor.



# Optional accessories

Order no.	Description	
6.1459.400	Sample beaker, plastic (PE), 75 mL, 144 pieces	
	Sample beaker, plastic (polyethylene, PE) 75 mL, suitable for sample racks: 6.2041.340, 6.2041.350, and 6.2041.800, suitable for 6.02041.040 OMNIS Software sample rack, 144 pieces.	

---