



Application Note AN-RS-029

玉米上拉硫的痕量

Protecting consumer safety with Misa

Malathion is an insecticide widely used on a broad spectrum of plant species. Although classified as having low toxicity, ingestion or acute skin exposure can be dangerous to humans. Several studies have implicated chronic exposure to malathion in the development of certain cancers. Maximum residue limits for malathion have been enacted by the regulatory agencies of several countries: the US Food and Drug Administration sets maximum residue limits at 8 $\mu\text{g/g}$ in foods, while the EU has a

considerably more stringent limit of 20 ng/g . SERS is an accepted method for detection of malathion on fruit and vegetable surfaces. Misa (Metrohm Instant SERS Analyzer), which requires minimal laboratory chemicals and consumables and provides an extremely user-friendly interface, is an excellent SERS solution for trace detection of food adulterants. Misa is a formidable advancement in cost and convenience related to food safety testing and data analysis.

INTRODUCTION

This application note describes a simulated test procedure for detecting malathion sprayed on corn kernels. The assay is based on the

acquisition of SERS-specific spectra for malathion in acetone extracts using Misa and gold nanoparticles (Au NPs).

REFERENCE SPECTRUM AND LIBRARY CREATION

To establish a reference spectrum, a pure malathion standard at 100 $\mu\text{g/mL}$ in ethanol was analyzed using Au NPs. The unique SERS

spectrum shown in **Figure 1** can be used to create a library entry for malathion.

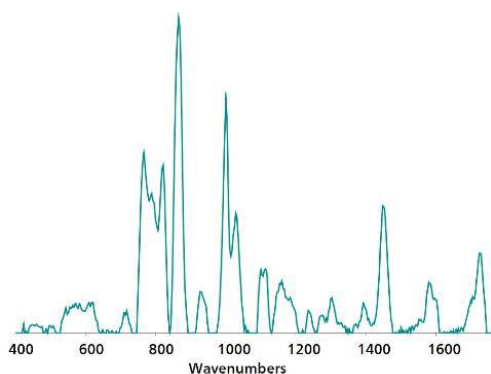


Figure 1. Standard Au NP SERS reference spectrum of malathion.

EXPERIMENT

A stock solution of malathion in acetone was sprayed onto field corn kernels to yield a range of test samples from 1–20 $\mu\text{g/g}$ (concentrations calculated with respect to mass of corn kernels). 0.25 mL of acetone was added to samples in capped glass vials, which were swirled occasionally over a period of 10 minutes to facilitate extraction. At the end of this time, 100 μL of the acetone extract was transferred to a second glass vial and dried on a hot plate. The residue was resuspended in 450 μL of Au NPs and 50 μL of 0.5 mol/L NaCl, the vial was gently shaken to mix, and then immediately placed into the vial attachment on Misa for measurement.



Table 1. Experimental parameters

Instrument		Acquisition	
Firmware	0.9.33	Laser Power	5
Software	Misa Cal V1.0.15	Int. Time	10 s
Misa Vial Attachment	6.07505.040	Averages	10
ID Kit - Au NP	6.07506.440	Raster	ON

RESULTS

Overlaid baseline-corrected spectra acquired for malathion recovered from corn kernels reveal high-resolution malathion detection down to 5 $\mu\text{g/g}$ (Figure 2). Note at these low

concentrations, SERS spectra are very sensitive to any other SERS-active moieties present, including organic materials dissolved with the target compound and the SERS substrate itself.

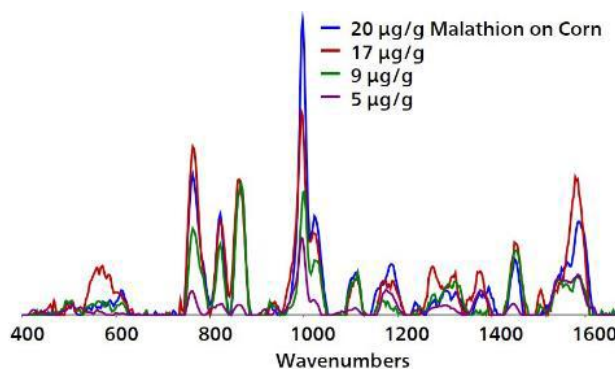


Figure 2. Overlaid baseline-corrected spectra acquired from Au NPs show detection of malathion on field corn kernels to 5 $\mu\text{g/g}$.

FIELD TEST PROTOCOL

Detection of malathion in the field

Place 2–3 pieces of corn in a vial and fill the vial halfway full with acetone, and allow to rest for 5 to 10 minutes, swirling occasionally. With a pipette, remove half of the solvent to a *clean, dry vial* and evaporate to dryness on a hotplate. Fill

this vial halfway full with Au NPs and add 2 drops of NaCl solution, then cap and shake the vial gently to mix. Insert into the vial attachment on Misa for measurement.

Table 2. Requirements for field test protocol

ID Kit - Au NP	6.07506.440
includes:	Gold nanoparticles (Au NP)
	Scoop
	Disposable pipettes
	2 mL glass vials
Reagents	
Acetone	
NaCl solution	3 g NaCl in 100 mL water
Test settings	Use ID Kit OP on MISA

CONCLUSION

Misa offers a facile, green, and economical method for sensitive detection of malathion sprayed on corn ears. Based on the unoptimized protocol reported in this application note, Misa

provides sufficient sensitivity for detecting malathion at concentrations that approximate or exceed the US maximum residue limit for sweet corn.

CONTACT

Metrohm AG
Ionenstrasse
9100 Herisau

info@metrohm.com

CONFIGURATION



MISA Advanced

Metrohm Instant SERS Analyzer (MISA) 是一款高性能、便携式分析系,可快速/定非法物、食品添加和微量食品染物。MISA 的特点是配了 Metrohm 的道光栅描 (ORS) 技的光。其空需求小和并且池寿命有所延,用于或移室用。MISA 提供各 1 激光附件,可活取。分析可通 BlueTooth 或 USB 接行。

MISA Advanced 套件是一个完整套件,其作用是用能用 Metrohms 米粒溶液和 P-SERS 条行 SERS 分析。MISA Advanced 套件包含了一个 MISA 小管附件、一个 P-SERS-附件、一个 ASTM 校正准件、一个 USB 迷、一个 USB 供元和用于行 MISA 器的 MISA Cal 件。随供了一个用来安全保管器和附件的固保箱。



ID – Au NP

ID 套件 - Au NP 包含了 Mira/Misa 用使用体金溶液行 SERS 分析所需的件。套件包含了一个一次性抹刀、一个移液管、品小瓶和一个含金体的瓶子。